

Installation Instructions

Hudson Rear Seat Radio Speaker H. A. 213908

1. Put the rear seat radio speaker grille, No. 211640 on the rear shelf, parallel to the rear seat. Place the center of the grille 4" from the rear seat back cushion and on the center line of the car. Use the grille as a template to locate and drill four 5/16" diameter holes through the cloth, trimboard, and shelf panel. (Fig. 1)

2. Cut a 6" x 8 3/4" oval hole through the cloth and trimboard in the position indicated in figure 1.

3. On broughams and sedans, layout and drill twenty eight holes in the rear panel shelf. On club

coupes twenty four holes are required in the shelf. Omit holes marked "x". (Fig. 1)

4. Plug green 180" wire No. 215928 into the green pin jack on the rear seat speaker and plug the black 41" ground wire No. 215929, into the other pin Jack.

5. Place the grille, No. 211640 in position on the rear shelf. Fasten the screen No. 215926, the speaker No. 213880, and the speaker cover No. 215982 to the under side of the rear shelf panel with four screws, No. 170417, four washers No. 171117, and four nuts No. 12790, (Fig. 2)

6. Ground the black wire No. 215929 under rear junction block mounting screw, located in the left rear corner of the car luggage compartment. (Fig. 3)

7. Fasten the wires to the rear shelf with clips No. 212872. (Fig. 3)

8. Dress the green speaker wire down behind the right hand end of the seat, under the floor mats and up behind the right hand kick pad. (Fig. 3)

9. Drill a 1/2" diameter hole through the instrument panel at the drill spot on the instrument switch mounting panel ornament, three inches to the right of the windshield wiper control knob for the left hand drive cars, and three inches to left of windshield wiper control for right hand drive cars. (Fig. 4)

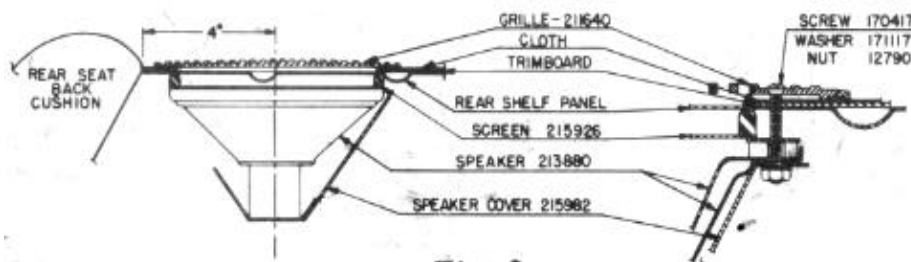
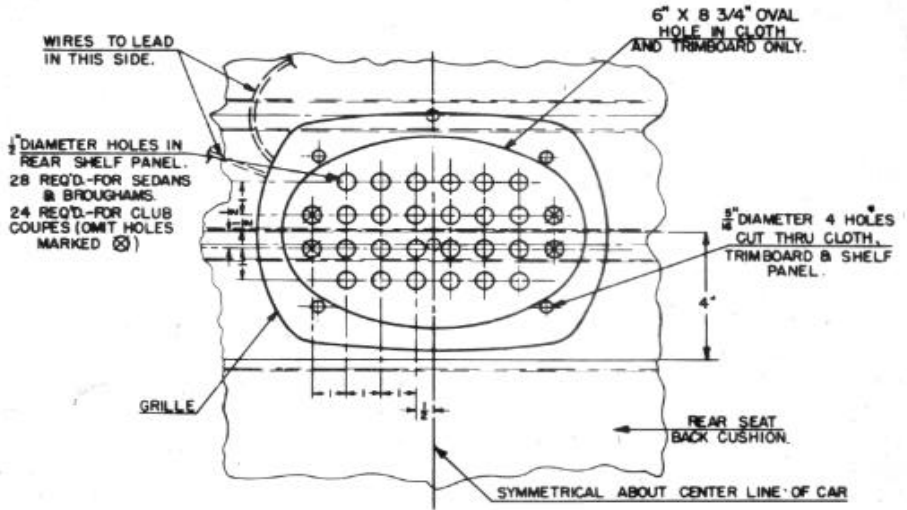


Fig. 2



10. Connect cable No. 215930 to the speaker switch No. 215927. Remove the speaker. Remove the speaker cable from the regular front speaker and connect, in its place, the cable No. 215930 from the speaker switch. (Fig. 5)

Connect the speaker cable from the set, and the Wire No. 215928, from the rear speaker, to the switch as shown in figure 5.

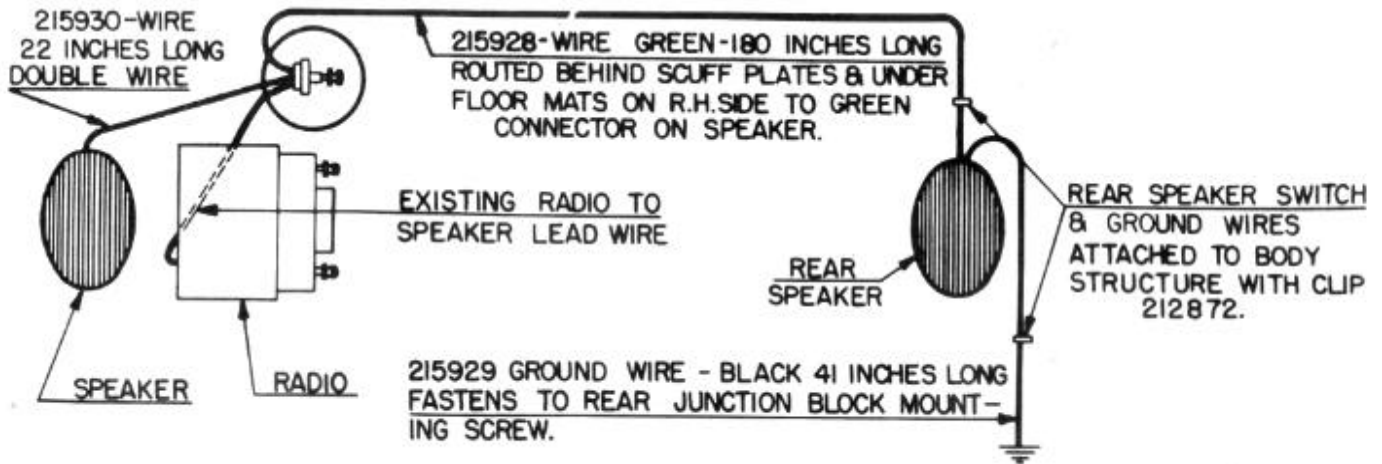


Fig. 3

11. Place the speaker control switch in the hole on the instrument panel and fasten securely with switch mounting bezel No. 301014, and nut No. 300767. Fasten the knob, No. 300766, in place by tightening the set screw No. 171105. (Fig. 4)

12. When properly installed, the speaker control switch will allow the front and rear speakers to operate independently, or both at the same time.

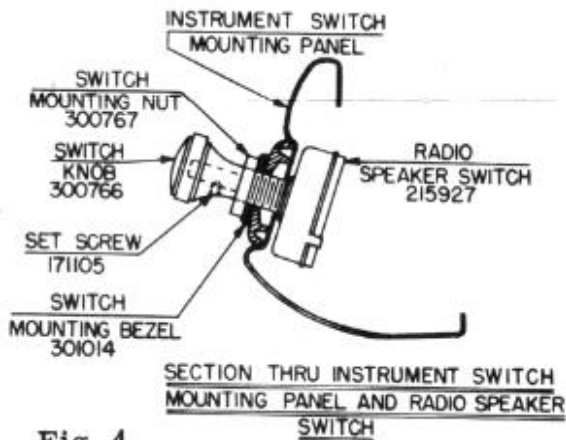


Fig. 4

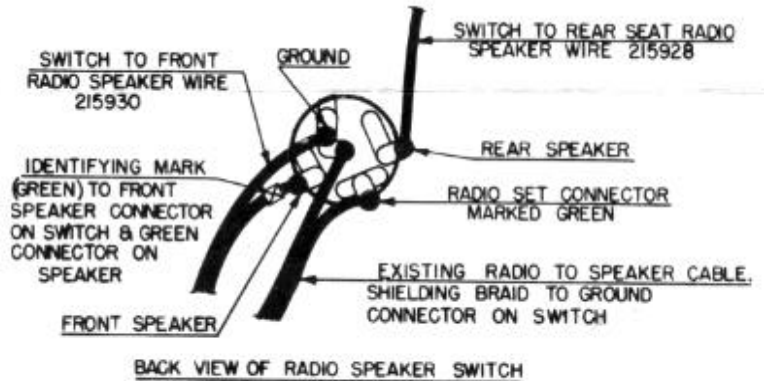


Fig. 5

PARTS LIST

Description	Hudson Part No.	Description	Hudson Part No.
Grille	211640	Switch Knob	300766
Screen	215926	Set Screw	171105
Speaker	213880	Switch Mtg. Bezel	301014
Speaker Cover	215982	Cable	215930
Screw	170417	Cable	215928
Washer	171117	Cable	215929
Nut	12790	Clips (2)	212872
Switch	215927		
Switch Mtg. Nut	300767		