

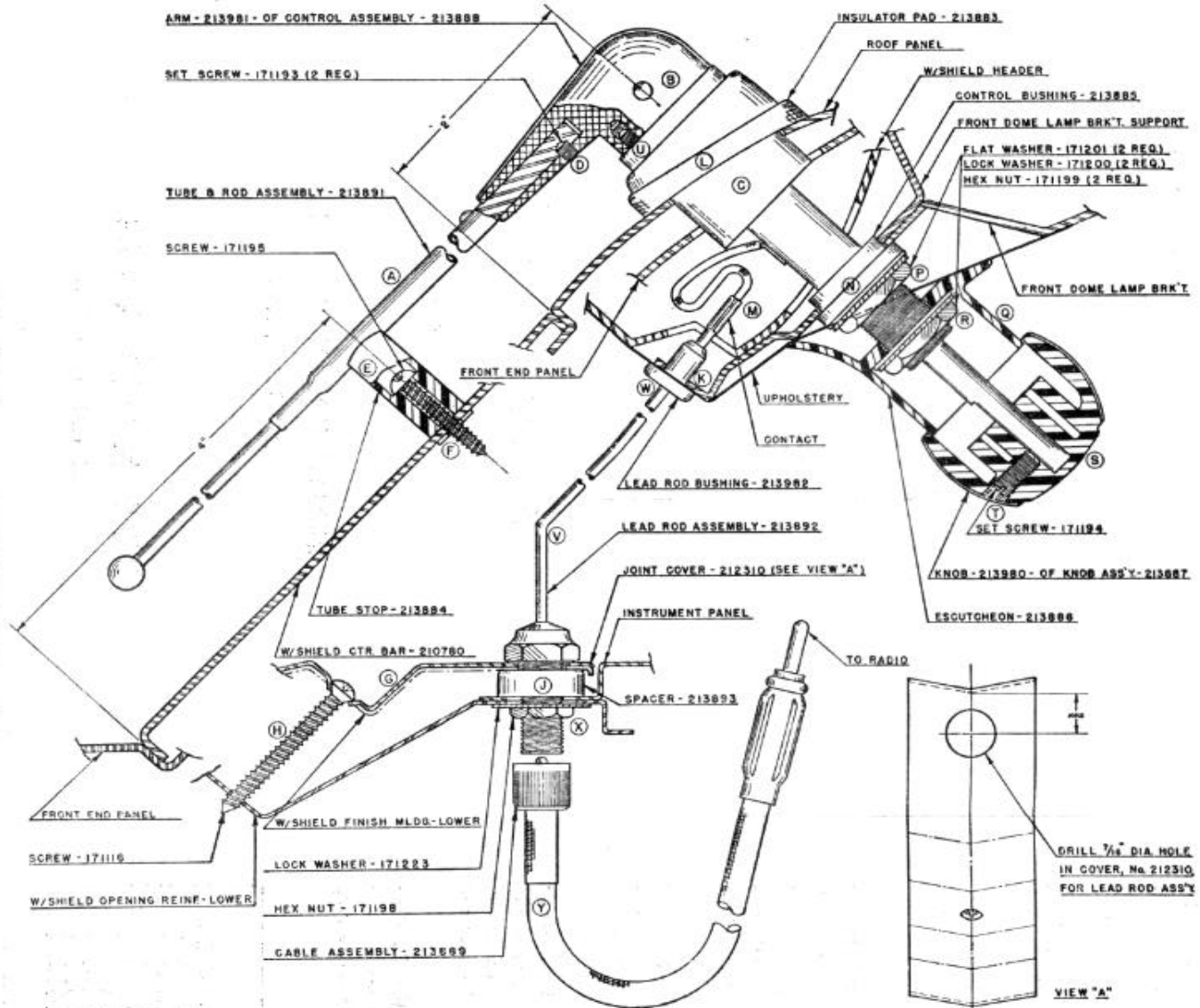
# HUDSON



## RADIO ANTENNA KIT 213890

INSTALLATION AND OPERATING  
INSTRUCTIONS

HUDSON MOTOR CAR CO.  
DETROIT, MICH., U. S. A.



1.) Insert TUBE AND ROD ASSEMBLY (A) into ARM (B) of CONTROL ASSEMBLY (C) and lock securely in place with SET SCREW (D) using BRISTOL WRENCH No. 213984.

2.) To mount STOP (E), drill a No 31 (.120) hole (F) in, the Windshield Center Bar 4" from the Cowl Panel. Mount the Stop with Screw as shown.

3.) On centerline ridge of Roof Panel, drill a 1-1/8" diameter hole 2" above Windshield Center Bar for Control Assembly. Inside the car, remove Mirror and locate a 1/4" diameter hole (K) which can be felt through the Upholstery in the bottom tab of the Front Dome Lamp Bracket. Pierce the Upholstery at this point with a pencil.

4.) To mount Control Assembly, first assemble rubber INSULATOR PAD (L) over the Bakelite Insulator of the Control Assembly. Note the word "Top" on the underside of the Pad for correct positioning. Tie a piece of string approximately 12" long onto the CONTACT (M) on the Control Assembly. Thread the string through the Roof Panel, Front End Panel and info the interior of the car by way of the hole previously pierced in the Upholstery. With the Tube and Rod Assembly in a line parallel to the Windshield Center Bar, push the Control Assembly through the 1-1/8" diameter hole in the Roof Panel. Where the assembly pushes against the Upholstery on the inside of the car, make a slit approximately 5/8" long. Pull the assembly through making sure that the rubber Insulator Pad is in correct position.

Assemble BUSHING (N) over the threaded sleeve so that it fits into hole in Front Dome Lamp Bracket as shown. Slip FLAT WASHER and LOCK WASHER over the sleeve and secure with HEX NUT (P). Tighten assembly in place so that the Tube and Rod Assembly rests in the Stop as shown.

Position the ESCUTCHEON PLATE (QT) so that it comes flush with the Upholstery and secure with FLAT WASHER, LOCK WASHER and HEX NUT (R). DO NOT tighten the Hex Nut too much or the plastic Escutcheon Plate may distort crack.

Place KNOB (S) on end of shaft. The Arrow will point in the direction of the Tube and Rod Assembly. Fasten the Knob to the shaft with SET SCREW

Note: The Tube and Rod, when in "down" position, must rest in the Stop. If it does not seat completely, lift the Arm about 90° from the Windshield and remove the SCREW (U) from the underside using the Bristol Wrench. Thread Screw into the hole diagonally opposite in the Arm.

If the Mast rests too heavily in the Stop, the Screw in its original position can be backed slightly out of its hole to raise the Mast from the Stop.

5.) Remove JOINT COVER (G) from Instrument Panel by taking out SCREW (H). Drill a 7/16" diameter hole in Joint Cover as indicated in View "A". Position SPACER (J) on Instrument Panel and re-install Joint Cover. Leave the Screw a little loose.

6.) To mount LEAD ROD (V), first pull CONTACT (M) through Upholstery and insert the upper end of the Lead Rod. Push Contact back through Upholstery and through the Bracket, pressing the BUSHING (WI) firmly into the 1/4" diameter hole in the Front Dome Lamp Bracket.

Insert the threaded sleeve of the Lead Rod through the 7/16" diameter hole in Joint Cover, Spacer and Instrument Panel. From the underside of the dash board, assemble the LOCK WASHER and HEX NUT (X). Tighten securely. Finally tighten the Screw in the upper face of the Joint Cover. Replace the Mirror.

7.) Assemble the Lead-In CABLE ASSEMBLY (Y) by screwing the Coupling Nut on to the Sleeve of the Lead Rod. Make certain that the Male Pin is directed straight into the Female Contact in the Lead Rod. Insert Cable Plug into Socket in Radio.

PARTS INCLUDED IN RADIO ANTENNA KIT					
Name	Part No.	Qty.	Name	Part No.	Qty.
Self-Tapping Screw	171195	1	Escutcheon	213886	1
Hex Jam Nut	171198	1	Knob Assembly	213887	1
Hex Nut	171199	2	Control Assembly	213888	1
Internal Lock Washer	171200	2	Cable Assembly	213889	1
Flat Washer	171201	2	Tube and Rod Assembly	213891	1
External Lock Washer	171223	1	Lead Rod Assembly	213892	1
Pad	213883	1	Spacer	213893	1
Stop	213884	1	Bristol Wrench	213984	1
Bushing	213885	1			