

# INSTALLATION INSTRUCTIONS

## 1942 HUDSON AUTO RADIO 6 TUBE MODEL DB-42

### ANTENNA INSTALLATION INSTRUCTIONS

Complete instructions for installation of the antenna are packed with each antenna kit.

### RADIO INSTALLATION INSTRUCTIONS

1. Install antenna.
2. Remove decorative plate in center of grille covering radio opening.
3. Remove floor mat, place foot switch in position and secure with 3 no. 8 R.H. self tapping screws in holes provided as shown in Fig. 1-A
4. Dress foot switch lead to left of clutch pedal and vertically behind fire wall pad.
5. Loosen and drop accessory switch bracket.
6. Plug foot switch cable in socket provided on right side of receiver and insert receiver from bottom of instrument panel, starting it up in a vertical position, foot switch cable up, until the rear end reaches the top of the air hopper. Bring the front of the receiver forward so that the knob shafts protrude through the shaft openings in the instrument panel.
7. Screw the knob shaft bushing nuts in place with the tips of long nose pliers in holes provided.
8. Attach side mounting bracket by fastening one end to side of receiver case with wing nut. Remove top cowl ventilator hand bracket bolt and replace with 1/4"x 3/4" M.S. Secure radio bracket to the cowl ventilator handle bracket with flat washer, lock washer and nut. Fig. 1.
9. Remove cardboard protector from speaker unit and fasten speaker and bracket assembly in place with two 1/4"x 3/4" M. S., flat washers, lock washers, and nuts provided, as shown in Fig. 1. Plug speaker cable plug into socket provided on speaker frame.
10. Fasten controls in place as shown in Fig. 1-C.  
CAUTION-Tuning knob must be placed 3/16" away from instrument panel in order to rotate freely in the automatic position.
11. Fasten accessory switch bracket back in place.
12. Remove ash tray assembly and plug antenna lead into socket provided on top of receiver.
13. Fasten "A" lead to fuse block as indicated in Fig. 1.
14. Turn receiver on and tune to a weak station near 1200 K.C. (see instruction card.) Adjust antenna trimmer on top of receiver through ash tray opening for maximum volume. Place ash tray back into instrument panel.
15. Place floor mat on flat surface. Mark and cut one inch hole as shown in Fig. 1-B for foot switch button. Replace mat on car floor.

### SUPPRESSION

16. Attach condenser, part No. 22-1262 to rear of generator with machine screw and lock-washer provided. Connect condenser lead to generator "A" terminal, Fig. 1-D.
17. Install suppressor in center hole of distributor cap being sure to make good contact. Place distributor lead in top of suppressor Fig 1-E.
18. Mount ignition lock condenser part No. 22-1263 under rear left nut holding ventilator handle guide assembly. Connect the other lead to the "AM" terminal of the ignition lock Fig. 1.
19. Attach condenser part No. 22-1260 to the upper rear cap screw on the engine water manifold plate and attach the condenser lead to the heatindicator terminal, Fig. 1-F.
20. Install bonnet grounding spring under hood lacing 231/2" to left of center line of car as shown, using no. 8 sheet metal screw Fig. 1-G.
21. Remove tape from special hole in dash and install flat ground strap from left rear cylinder head stud to dash. Fasten it to dash with sheet metal screw and shake proof washer. The ground strap is mounted under the regular stud nut on the eight cylinder cars. The ground strap is placed on top of the regular stud nut on the six cylinder cars and held in place by special nut furnished in kit. Fig. 1-F.

IMPORTANT: Dirt and paint must be carefully removed from contact points to insure good electrical circuit.

# RADIO KIT—1942—HUDSON

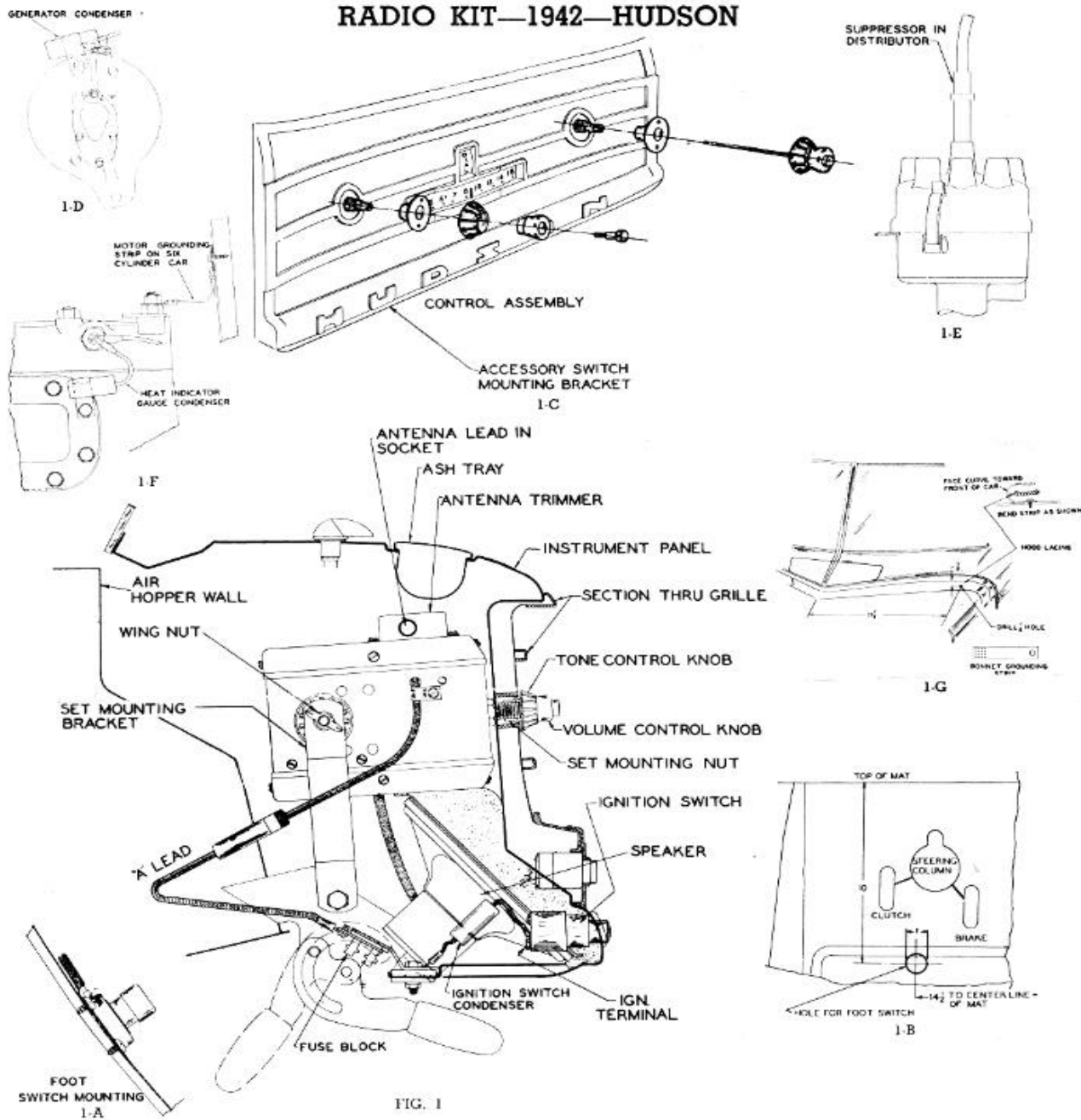


FIG. 1

## 1942 RADIO RECEIVER KIT Model DB-42 HA-204800

Items included in above kit are:  
 Radio receiver  
 Mounting bracket, screws, lock-washers  
 Speaker and bracket assembly  
 Distributor suppressor

Generator condenser  
 Temperature gauge condenser  
 Ignition lock condenser  
 Bonnet grounding strip  
 Motor Bond strap  
 Sheet metal screw  
 Nut for 6 cyl. cars  
 Lockwasher

## RADIO ANTENNA KITS

HA-205452 60" Telescopic  
 HA-205450 90" Telescopic  
 HA-205451 Vacuum antenna  
 Antenna  
 Lead-in  
 Attaching parts  
 (See antenna kit for full installation instructions.)