

Parts Price List

HUDSON
"20"



1910

Prices quoted herein are subject
to change without notice

July 1, 1916

Revised Edition

Hudson Motor Car Company
Detroit, Michigan

Parts Price List

HUDSON

"20"



1910

Prices quoted herein are subject
to change without notice

February 1, 1916

Revised Edition

Hudson Motor Car Company
Detroit, Michigan

HUDSON dealers who carry an adequate supply of repair parts in stock, find that such provision helps materially in closing sales. Both owners and prospective purchasers of HUDSON cars are influenced by the dealer's ability to care for their wants. The value of an automobile is in proportion to the continued service which it renders to its owner. If it must be laid up awaiting the arrival of some repair part from the factory, which should have been kept in stock by the dealer, the owner has been delayed and his enthusiasm for the HUDSON car has diminished proportionately.

All HUDSON dealers are expected to carry in stock a sufficient number of repair parts to meet all ordinary demands, and all HUDSON owners alike are entitled to prompt service in this respect at the hands of the dealers from whom they purchased their cars.

Repair parts may be obtained directly from most of our dealers, except where the stock has become depleted due to oversight or to an unusual demand for the particular part wanted. In cases of this kind, the parts may be ordered by the owner through our dealer, or if time can be saved, may be ordered direct from the factory. As we do not open accounts with other than HUDSON dealers, direct shipment of parts from the factory to an owner is always sent C. O. D.

We cannot make allowances on parts which are claimed to be defective unless they are returned to our factory for inspection. Pay for the new part which is to replace the one supposedly defective. Return the old parts promptly and just allowance will be made, providing they are found defective by our inspectors. Parts returned for credit must be sent prepaid and tagged with the name and address of the shipper. Unless these charges are prepaid, the package will be refused. In returning the parts under the above conditions, always advise us promptly at the time of shipment, giving full information regarding the parts and the condition under which the defect was called to your attention.

Any claims for shortage of material should be made immediately upon receipt of the shipment, and should be accompanied by the packing slip.

We Do Not Open Accounts with Other than Hudson Dealers

PREFACE

Parts not listed will not be furnished by the Hudson Motor Car Company.

We do not sell Storage Batteries or battery parts. The Electric Storage Battery Co., Allegheny Avenue and Nineteenth Street, Philadelphia, Pa., will furnish you, upon application to them, with parts price list of the batteries used on Hudson cars, and list of their Sales Offices and Service Stations. All orders for batteries or repair parts must be sent direct to them.

It will be noted that a number of prices are not quoted in this book, but will be furnished upon application to our Parts Order Department. Our reason for this is the fluctuation of the market value of these parts.

In the list of parts, the column of numbers shown at the extreme left of each page represents the part numbers of the parts, and we insist that this number be used in all instances when ordering parts.

The second column shows the symbols which represent the various models on which the part is used. The key for these symbols is as follows :

† 1910 Model 20	⊙ 1913 Model 37	□ 1914 Model 54
‡ 1911 del 33	■ 1913 Model 54	▲ 1915 Model 40
*1912 Model 33	△ 1914 Model 40	● 1915 Model 54

The name of the part is shown in the third column. In each instance *give this name in connection with part number* when ordering.

The fourth column shows illustration numbers. These do not appear on every page, only being shown opposite the name of parts that are illustrated. Never use this number when ordering parts as it has no connection with the parts. It is used only to facilitate in locating the parts in the list after finding the illustration, as the illustration numbers are in numerical order and those of the parts are not.

Column five shows the number of parts required in the assembly as listed.

The sixth column shows the price of parts EACH, not of the number shown in the "required" or No. 5 column.

HOW TO ORDER PARTS

The prices indicated in this list are subject to change without notice, they are f. o. b. Detroit, Mich.

Parts ordered by a dealer for an owner will be billed to the dealer unless the dealer specifies C. O. D. shipment.

HUDSON dealers aim to carry sufficient stock to meet all ordinary demands. Should they be unable to supply what is wanted, the owner may telegraph or write to the factory for same.

When ordering parts from the factory always address :

Hudson Motor Car Company
Parts Order Department
DETROIT - MICHIGAN

Use the Order Blanks furnished by the Hudson Motor Car Company. If you are not supplied, advise and we will send you a supply.

Do not use the word "complete," it is too indefinite. Specify all the parts required.

In placing orders for parts, always refer to them by the full part number shown at the extreme left of each page describing the parts. In addition, always give the name of the part in full. You cannot be too explicit in writing your specifications. Describe the part fully and ALWAYS GIVE CAR NUMBER WITH THE ORDER.

**The Car Number will be found on
METAL PLATE ATTACHED TO THE FRONT SEAT HEEL BOARD**

When ordering parts to be sent to more than one address, send separate orders covering the different shipments.

Orders for fenders should indicate whether for front or rear, right or left, what tread, and what model. (Right and left mean when sitting in the driver's seat and facing the same direction as the car.)

Orders for front or rear axle should indicate whet her for standard or 60-inch tread.

When ordering wheels, be sure to give the size of the wheel. Specify color when ordering wheels.

We cannot be held responsible for errors and delays caused by inaccurate and incomplete information, therefore, you cannot be too careful in making out your order.

Practically all errors made by our Parts Order Department are due to incomplete or inaccurate information contained in the order when we receive it. Help us to eliminate the possibility of errors by being very particular in making out your specifications.

IN ORDERING BY TELEGRAPH

Below is a code which will greatly reduce the length of telegrams if you find occasion to order parts in this way. Please use this code. It will save expense and time.

Oak	Send by mail	Often	Your order	shipped
Oar	Send by mail insured.		National Express.	
Oasis	Ship by express C. 0 D.	Ogre	Your order	shipped
Obey	Ship by freight S. D. B-L.		Wells-Fargo Express.	
Object	Ship by express, open account.	Omega	Your order	shipped
Obtain	Referring to your order—Advise car number.		Adams Express.	
Occult	When and how did you ship our order?	Once	Your order	shipped
Occur	Answer wire regarding parts.		Western Express.	
Ocean	Advise routing your order.	Oppose	Your order shipped by freight.	
Old	Shipment of parts ordered not received.	Opal	Your order	shipped
	Please trace.		Dominion Express.	
Odor	Your order shipped	Oracle .	Expect ship order	
	United States Express.		about	
Offer	Your order shipped	Orbit	Are shipping today parts ordered.	
	American Express.			

Telegraphic orders are hard to interpret. Remember we cannot execute your order correctly unless it is accurate and very complete. It cannot be guessed at.

Here is an example of the right and wrong way to word a telegraphic order.

Right Way:

Send one each B-6-116 and B-6-115. Two each B-6-113 and B-6-126. Three of B-6-100.

Wrong Way:

Send one B-6-116, one B-6-115, two B-6-113, etc., as your telegram would read when we receive it : Send one B six one sixteen one B six one fifteen two B six one thirteen B six one sixteen three B six one hundred.

In all cases where car number is furnished with order for repair parts, parts will be shipped to car number regardless of whether the part number given is correct or not.

If parts are wanted for stock only, do not give car number.

INSTRUCTIONS AS TO MANNER OF SHIPMENT

Always specify in your order whether you desire parts sent by mail, express, freight, or included with car load shipment of cars. If this matter is left entirely to our judgment we will ship by express.

All packages not exceeding the legal maximum weight and shipped on open account to our regular dealers will be sent by Parcels Post unless otherwise ordered. If insurance against loss (not to exceed \$50.00) is desired, an additional postal charge of ten cents will he made. In ordering, indicate whether insurance is wanted.

All packages shipped under collect charges are sent by express.

We cannot be held responsible for delay or damage to merchandise while in transit. Our responsibility ceases upon delivery of shipment to the transportation company. The company's receipt for same is evidence that the material is in good condition when it leaves our custody.

ABBREVIATIONS FOR DIFFERENT MODELS

- R.—Open Roadster.
- F. R.—Foredoor Roadster.
- T. C.—Open Touring Car.

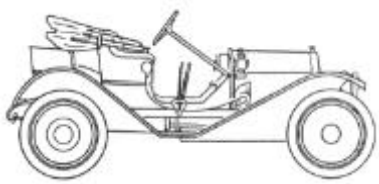
HUDSON

1910 "20"

NOTE.—When ordering axle parts for this model, do not overlook the fact that two different types of axles were used. The plain bearing axle was equipped with bronze bushings at the inner or differential end of the axle shaft, whereas the roller bearing type had Hyatt bearings throughout. The parts of these axles are not interchangeable and as our 1910 car records do not always indicate correctly the type of axle in the car, you can avoid delay and correspondence by an examination of the axle before ordering.

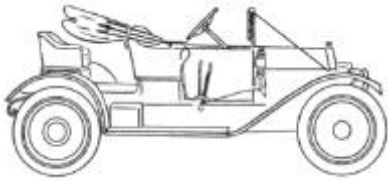
In placing orders for parts always refer to them by full part number shown at extreme left of each page describing the parts. In addition, always give the name of the part in full. You cannot be too explicit in writing your specifications. Describe the part fully and always GIVE CAR NUMBER WITH THE ORDER. The car number will be found on Metal Plate attached to front seat Heel Board.

CAR NUMBERS



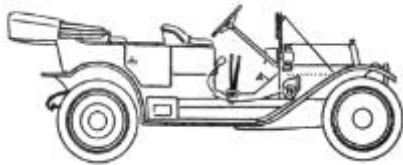
OPEN ROADSTER

(R) 1 to 4000



1910 FOREDOOR ROADSTER
1911 FOREDOOR ROADSTER

(FR) 4001 to 5000
(FR) 7101 to 7500



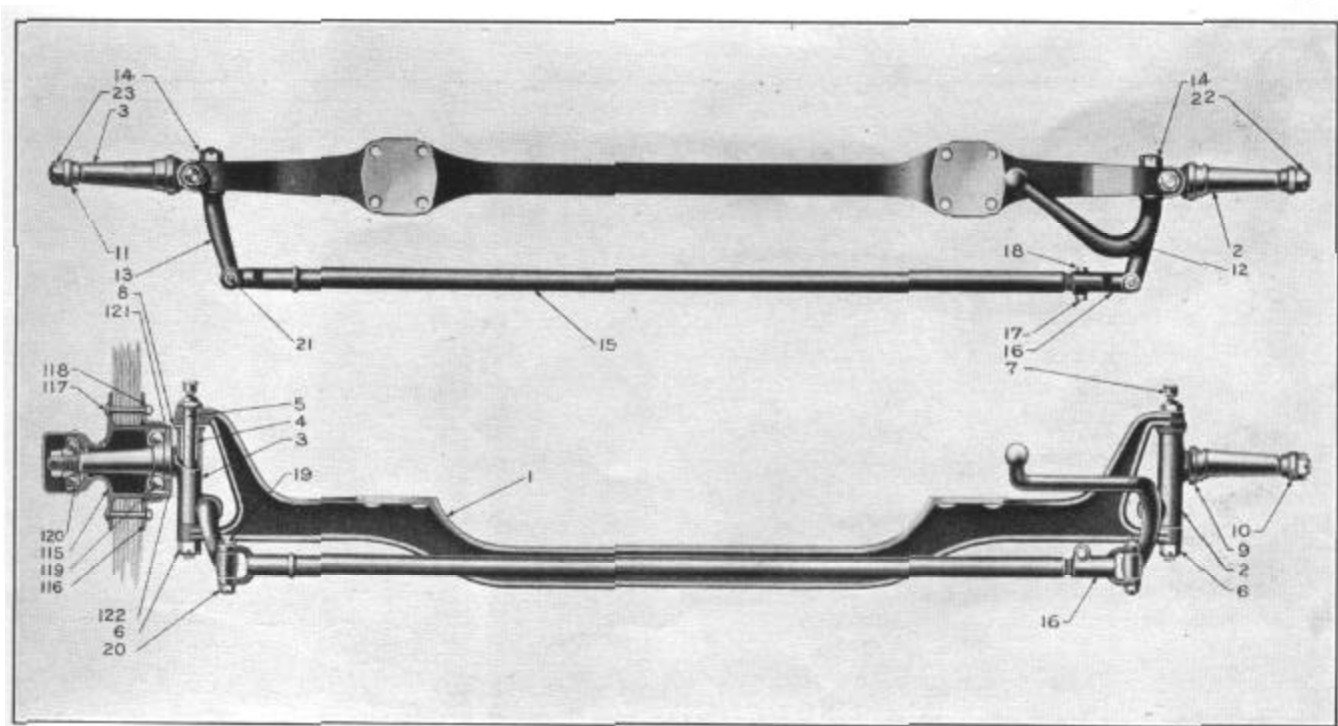
OPEN TOURING CAR

(TC) 5001 TO 7100

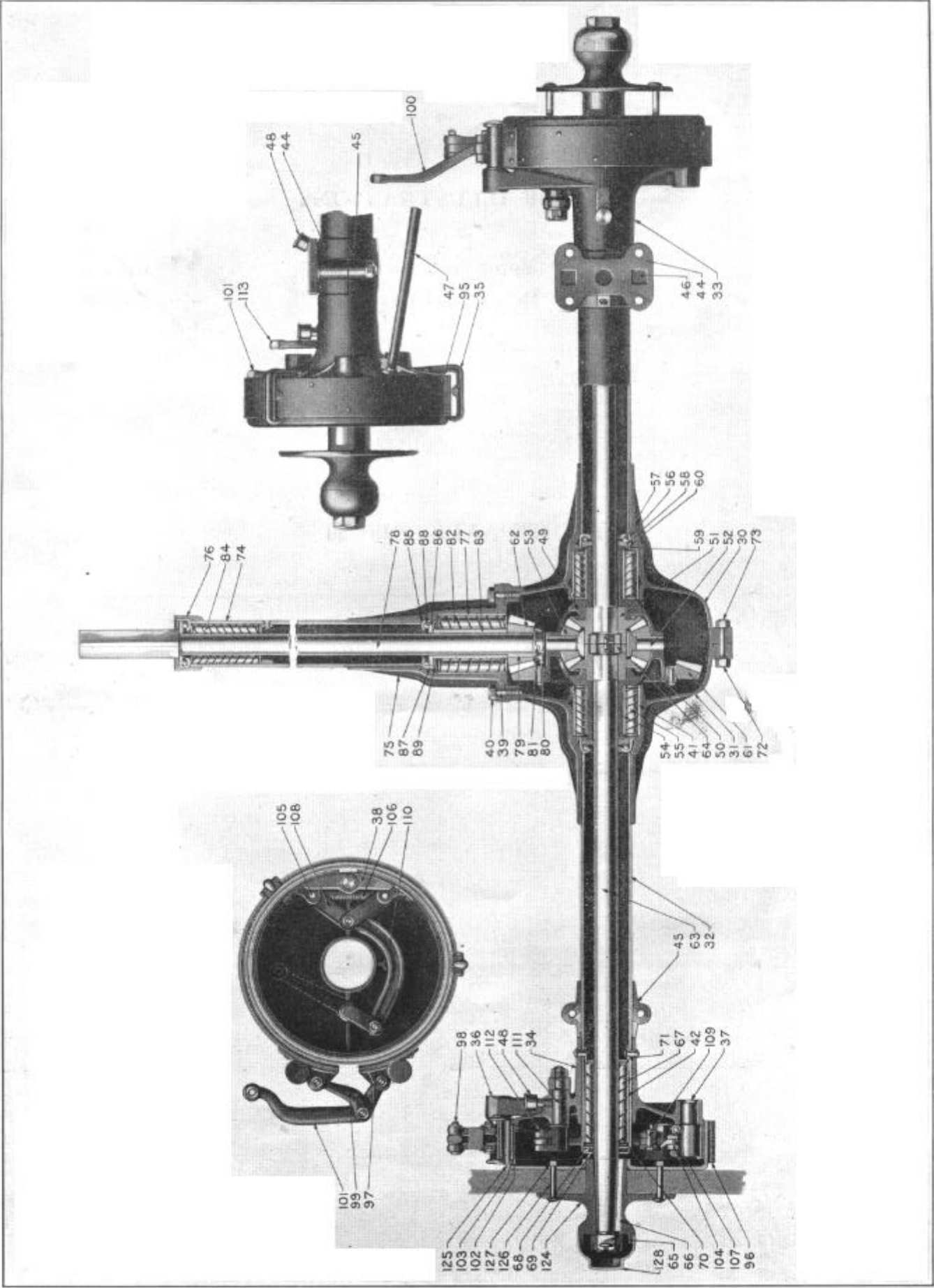
LIST OF ILLUSTRATIONS

FRONT AXLE	MOTOR (Side View)	CLUTCH
REAR AXLE	MOTOR (End View)	TRANSMISSION
STEERING GEAR		

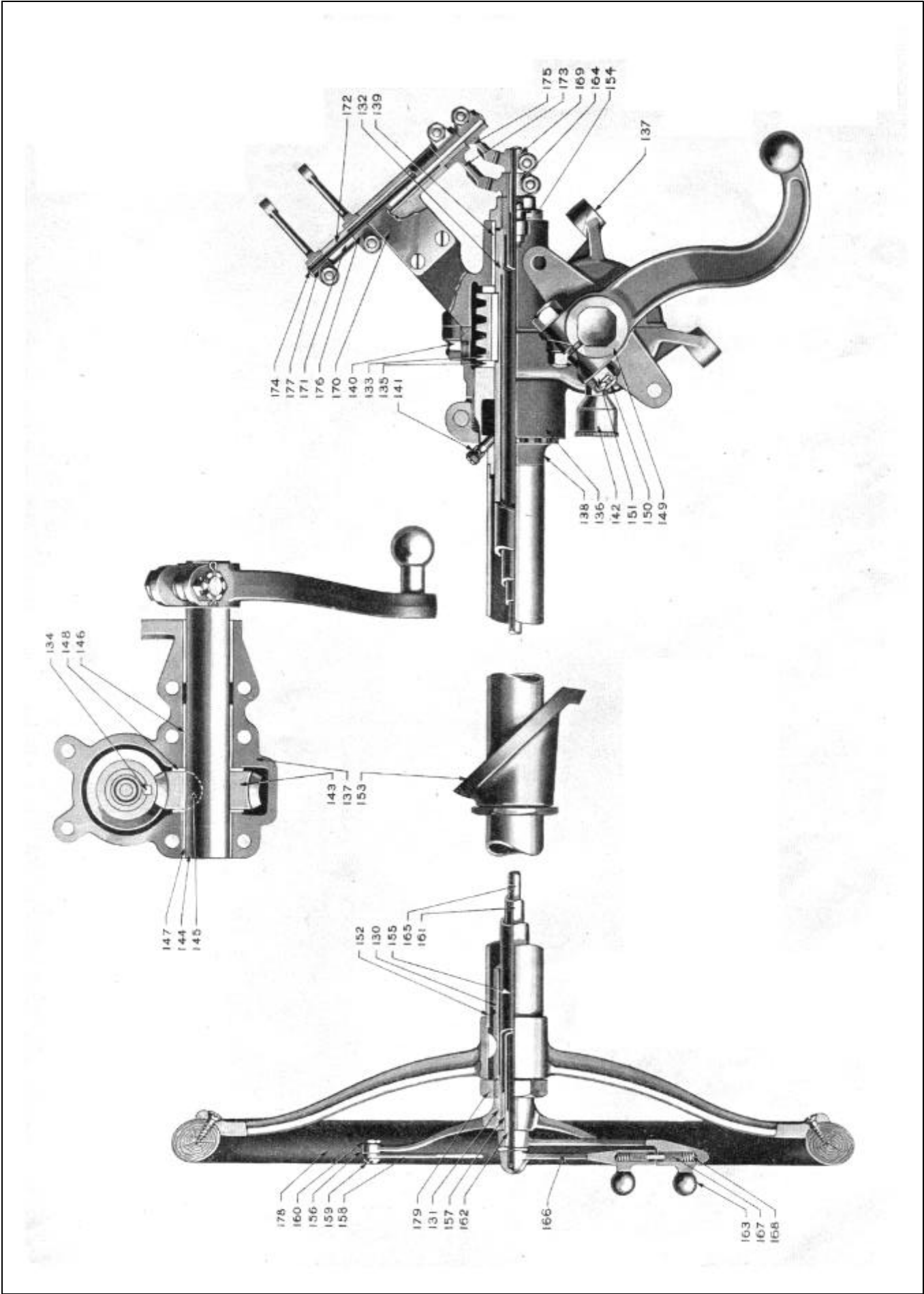
FRONT AXLE 1910—20



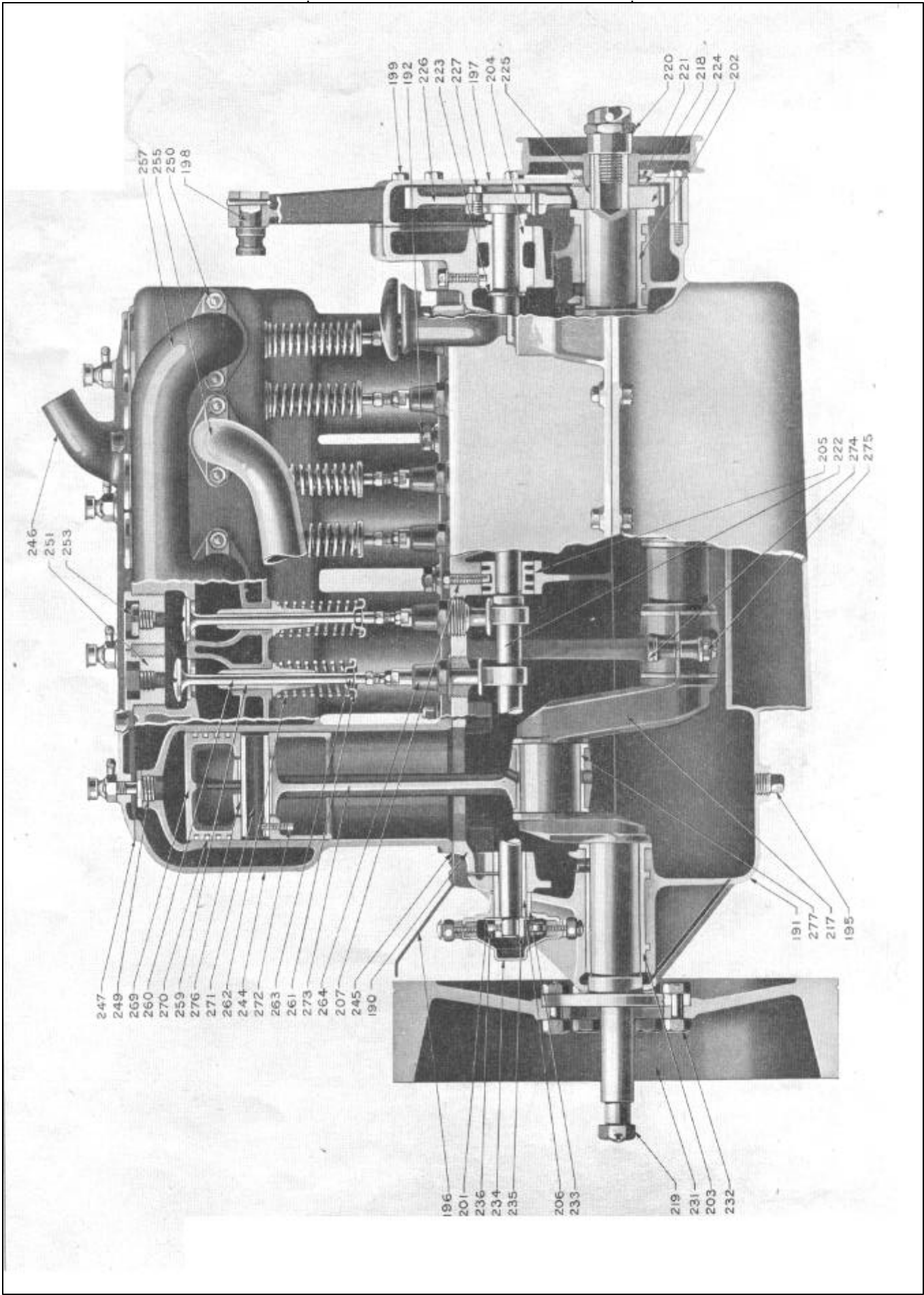
REAR AXLE 1910-20



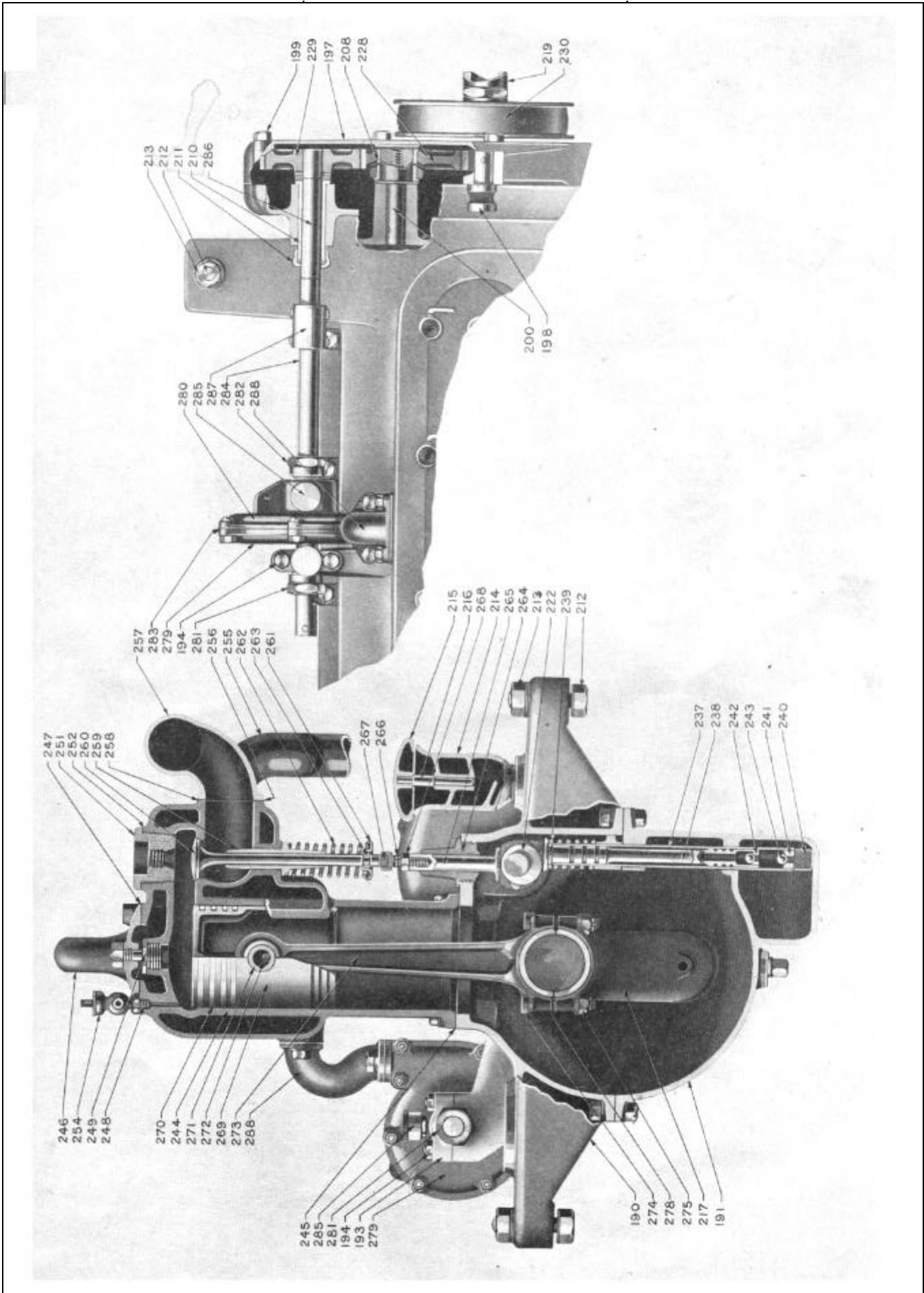
STEERING GEAR 1910—20



MOTOR (SIDE VIEW) 1910—20

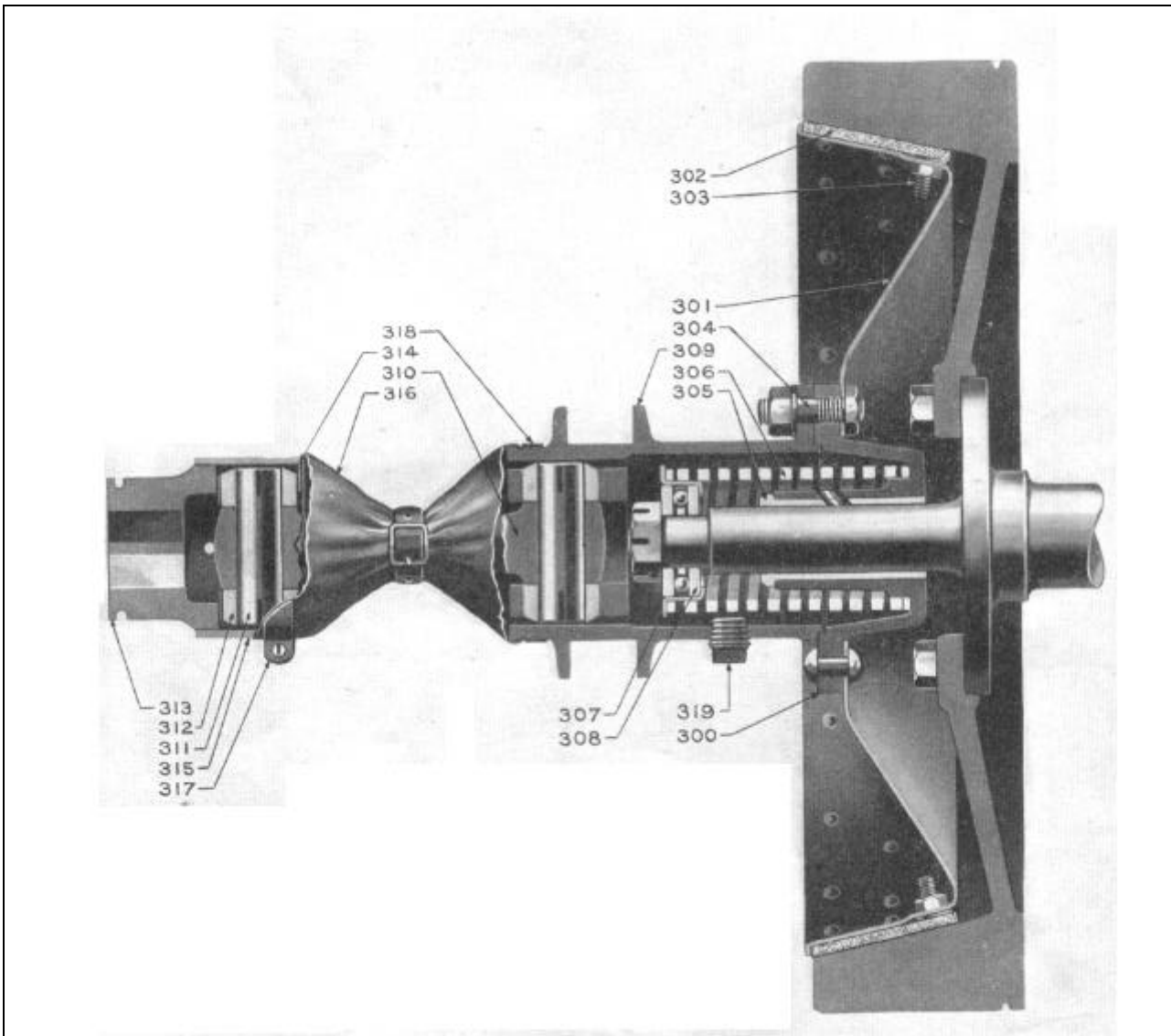


MOTOR (END VIEW) 1910—20

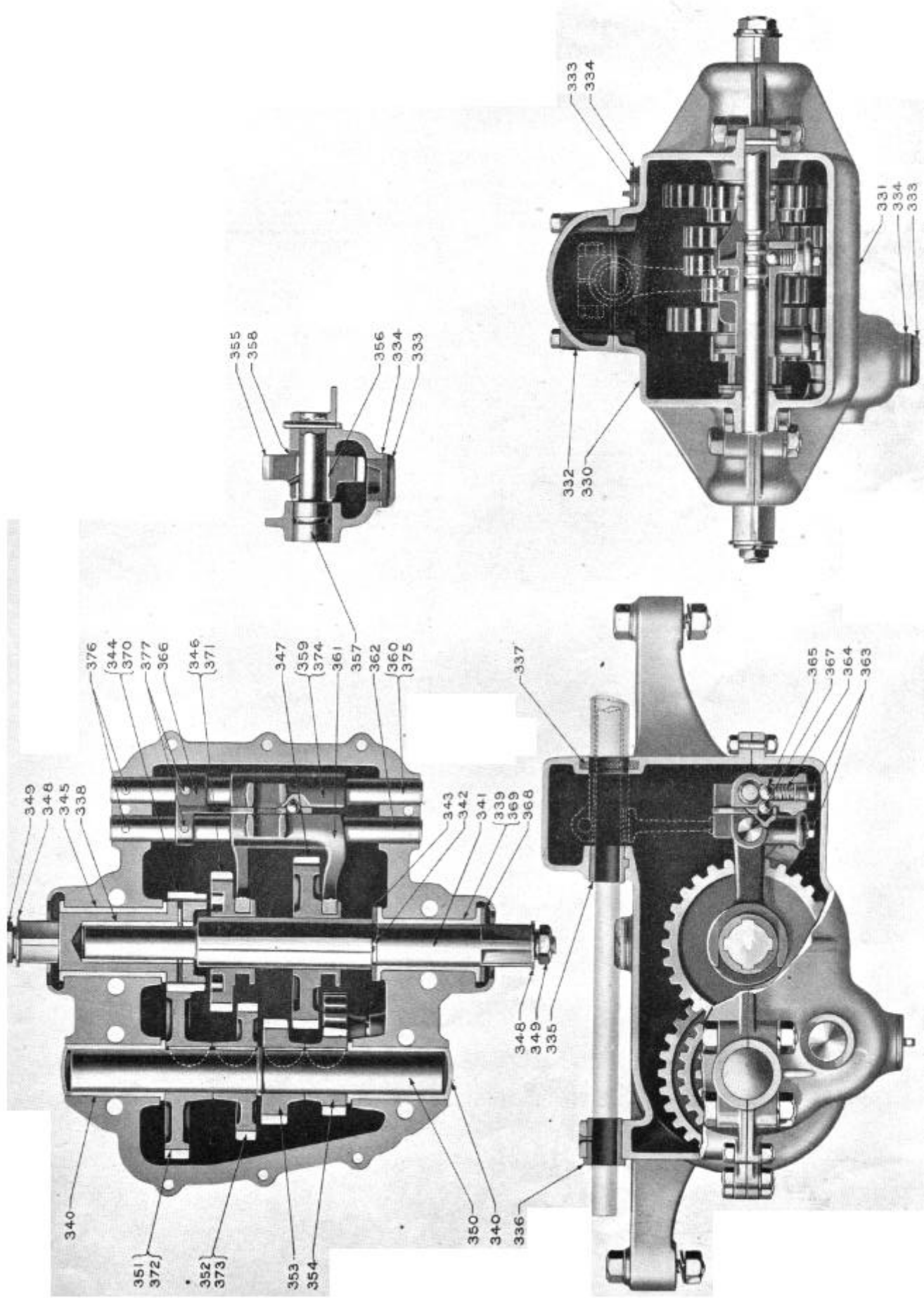


1910 - 20	HUDSON MOTOR CAR CO.	
-----------	----------------------	--

CLUTCH 1910—20



TRANSMISSION 1910–20



FRAME

Used on R. only.

Part No.	NAME OF PARTS	Illustration No.	No. Req.	Price Each
D-1-112	Frame Assembly (Includes Parts D-1-108 to D-2-114 and D-2-121, inclusive).....	1		\$50.00
D-1-108	Frame Side Member—Right.....	1		10.00
D-1-109	Frame Side Member—Left.....	1		10.00
D-1-106	Frame Sub Member—Right.....	1		2.00
D-1-107	Frame Sub Member—Left.....	1		2.00
D-1-104	Frame Cross Member—Front.....	1		2.75
D-1-103	Frame Cross Member—Middle.....	1		2.75
D-1-105	Frame Cross Member—Rear.....	1		3.25
D-1-101	Frame Corner Brace Rear—Right.....	1		.40
D-1-102	Frame Corner Brace Rear—Left.....	1		.40
D-2-153	Frame Front Spring Front Hanger—Right.....	1		2.50
D-2-154	Frame Front Spring Front Hanger—Left.....	1		2.50
D-2-107 ‡	Frame Front Spring Rear Hanger.....	2		1.00
D-2-106	Frame Rear Spring Front Hanger.....	2		2.25
D-2-109	Frame Rear Spring Rear Hanger—Right.....	1		2.25
D-2-108	Frame Rear Spring Rear Hanger—Left.....	1		2.25
D-2-115	Muffler Hanger—Front.....	1		.50
D-2-114	Muffler Hanger—Rear.....	1		.50
D-2-119	Frame Rear Step.....	1		.75
D-2-121	Tail Lamp Bracket.....	1		.50

Used on T.C. and F.R. only.

D-1-121	Frame Assembly (Includes Parts D-1-131 to D-2-107, D-2-151 to D-2-192, inclusive)....	1		\$50.00
D-1-131	Frame Side Member—Right.....	1		10.00
D-1-130	Frame Side Member—Left.....	1		10.00
D-1-128	Frame Sub Member—Right.....	1		2.00
D-1-129	Frame Sub Member—Left.....	1		2.00
D-1-123	Frame Cross Member—Front.....	1		2.75
D-1-124	Frame Cross Member—Middle.....	1		2.75
D-1-125	Frame Cross Member—Rear.....	1		3.25
D-1-126	Frame Corner Brace Rear—Right.....	1		.40
D-1-127	Frame Corner Brace Rear—Left.....	1		.40
D-2-133	Frame Front Spring Front Hanger—Right.....	1		2.50
D-2-134	Frame Front Spring Front Hanger—Left.....	1		2.50
D-2-107	Frame Front Spring Rear Hanger.....	2		1.00
D-2-138	Frame Rear Spring Front Hanger (Standard Tread).....	2		2.25
E-4-198	Frame Rear Spring Front Hanger (60-inch Tread).....	2		2.25
D-2-151	Frame Rear Spring Rear Hanger—Right.....	1		2.25
D-2-152	Frame Rear Spring Rear Hanger—Left.....	1		2.25
D-2-115	Muffler Hanger—Front.....	1		.50
D-2-114	Muffler Hanger—Rear.....	1		.50
D-2-192	Tail Lamp Bracket.....	1		.45

FRONT SPRING

Used on all models except where noted.

E-3-108	Front Spring.....	2		\$4.35
E-3-113	Front Spring Pad.....	2		.20
E-3-110 ‡	Front Spring Clip.....	4		.30
E-3-123 ‡	Front Spring Clip Spacer.....	2		.15
X-29-105	Front Spring Clip Nut.....	8		.04
E-3-119	Front Spring Shackle.....	4		.15
E-3-120	Front Spring Shackle Bolt.....	6		.35
X-30-154	Front Spring Shackle Bolt Nut.....	6		.05

REAR SPRING

Used on all models except where noted.

E-3-126	Rear Spring—Lower (Used on R. and F.R. only) (Specify 5 or 6 leaves).....	2		\$6.15
E-3-146	Rear Spring—Lower (Used on T.C. only).....	2		6.55
E-3-125	Rear Spring—Upper (Used on R. and F.R. only).....	2		3.45
E-3-145	Rear Spring—Upper (Used on T.C. only).....	2		4.00
E-3-114	Rear Spring Plate—Upper.....	2		.35
E-3-111	Rear Spring Clip—Lower.....	4		.25
E-3-112 ‡	Rear Spring Clip—Upper.....	4		.25
E-3-124	Rear Spring Clip Spacer—Lower Spring.....	2		.40

REAR SPRING—Continued

Used on all models except where noted.

Part No.	NAME OF PARTS	Illustration No.	No. Req.	Price Each
X-29-105	Rear Spring Clip Nut.....		16	\$0.04
E-3-121	Rear Spring Bolt—Front.....		2	.30
X-30-107	Rear Spring Bolt Nut.....		2	.05
E-3-151	Rear Spring Shackle.....		4	.15
E-3-147	Rear Spring Shackle Bolt.....		4	.45
X-30-150 †	Rear Spring Shackle Bolt Nut.....		4	.05

FRONT AXLE

Used on all models except where noted.

E-1-103 †	Front Axle Assembly (Standard Tread) (Includes Parts E-1-102, 24-E-151 to 24-E-154, 24-E-156 to 24-E-165, 24-E-169 to X-23-137, 24-E-159 and 24-E-160, inclusive).....	1	1	\$45.00
E-1-225 †	Front Axle Assembly (60-inch Tread) (Includes Parts E-1-226 to 24-E-154, 24-E-156, to 146, E-1-230 to X-23-137, inclusive).....		1	60.00
E-1-102 †	Front Axle Center (Standard Tread).....	1	1	30.00
E-1-226 †	Front Axle Center (60-inch Tread).....	1	1	35.00
24-E-151 †	Front Axle Spindle—Right.....	2	1	6.00
24-E-152 †	Front Axle Spindle—Left.....	3	1	6.00
E-1-204 †	Front Axle Spindle—Bushing.....	4	4	.20
24-E-153 †	Front Axle Spindle Bolt.....	5	2	1.25
24-E-154 †	Front Axle Spindle Bolt Nut.....	6	2	.25
87 †	Front Axle Spindle Bolt Grease Cup.....	7	2	.10
24-E-156 †	Front Axle Spindle Thrust Washer.....	8	2	.20
24-E-157 †	Front Axle Stationary Cone.....	9	2	.75
24-E-158 †	Front Axle Spindle Adjusting Cone—Right.....	10	1	.75
24-E-170 †	Front Axle Spindle Adjusting Cone—Left.....	11	1	.75
24-E-161 †	Front Axle Steering Arm—Right.....	12	1	5.25
24-E-162 †	Front Axle Steering Arm—Left.....	13	1	1.75
146 †	Front Axle Steering Arm—Nut.....	14	2	.25
24-E-165 †	Front Axle Tie Rod (With Fixed Clevis) (Standard Tread).....	15	1	2.75
E-1-230 †	Front Axle Tie Rod (With Fixed Clevis) (60-inch Tread).....	15	1	3.00
24-E-169 †	Front Axle Tie Rod Adjustable Clevis.....	16	1	.90
X-26-128 †	Front Axle Tie Rod Adjustable Clevis Clamp Bolt.....	17	1	.05
122 †	Front Axle Tie Rod Adjustable Clevis Clamp Bolt Nut.....	18	1	.95 doz.
24-E-167 †	Front Axle Tie Rod Pivot Pin.....	19	2	.45
24-E-168 †	Front Axle Tie Rod Pivot Pin Nut.....	20	2	.05
X-23-137 †	Front Axle Tie Rod Pivot Pin Oil Hole Plug.....	21	2	.10
1097 †	Front Axle Tie Rod Boot—Right.....		1	.40
1098 †	Front Axle Tie Rod Boot—Left.....		1	.40
24-E-159 †	Front Axle Steering Spindle Nut—Right.....		1	.20
24-E-160 †	Front Axle Steering Spindle Nut—Left.....	23	1	.20

REAR AXLE—ROLLER BEARING TYPE

Used on all models except where noted.

E-1-104	Rear Axle Assembly (Standard Tread) (Used on R. only) (Includes Parts E-1-240, 24-E-62 to 469, E-1-123, 446 to 25-E-66, E-1-106, 560 to E-1-129, E-1-133 to E-1-136, E-1-244, E-1-247 and E-1-260, inclusive).....	1	1	\$175.00
E-1-231	Rear Axle Assembly (60-inch Tread) (Used on R. only) (Includes Parts E-1-341, 24-E-62 to 469, E-1-123, 446 to 25-E-66, E-1-312 to E-1-129, E-1-133 to E-1-136, E-1-244, E-1-247 and E-1-260, inclusive).....	1	1	190.00
E-1-250	Rear Axle Assembly (Standard Tread) (Used on T.C. and F.R. only) (Includes Parts E-1-240, 24-E-62 to 469, E-1-123, 446 to 24-E-488, 25-E-113, E-1-335, E-1-106, 560, E-1-129 to E-1-136, E-1-326, E-1-247, and E-1-260, inclusive).....	1	1	175.00
E-1-321	Rear Axle Assembly (60-inch Tread) (Used on T.C. and F.R. only) (Includes Parts E-1-341, 24-E-62 to 469, E-1-123, 446 to 24-E-488, 25-E-113, E-1-335, E-1-312 to E-1-129, E-1-133 to E-1-136, E-1-326, E-1-247 and E-1-260, inclusive).....	1	1	190.00
E-1-240	Rear Axle Gear Case Assembly (Standard Tread) (Includes Parts E-1-137 to E-1-191, E-1-141, E-1-124 to E-1-243 and 490, E-1-139 and E-1-140, inclusive).....	1	1	58.50
E-1-341	Rear Axle Gear Case Assembly (60-inch Tread) (Includes Parts E-1-137, E-1-138, E-1-232, E-1-170 to E-1-191, E-1-141, E-1-124 to E-1-243, E-1-342, E-1-139 and E-1-140, inclusive).....		1	59.50
E-1-137	Rear Axle Gear Case—Right.....	30	1	15.00
E-1-138	Rear Axle Gear Case—Left.....	31	1	
E-1-164	Rear Axle Gear Case Tube (Standard Tread).....	32	2	4.50
E-1-170	Rear Axle Brake Support—Right.....	33	1	5.25
E-1-171	Rear Axle Brake Support—Left.....	34	1	5.25
E-1-179 †	Rear Axle External Brake Band Retainer.....	35	4	.15
E-1-180	Rear Axle External Brake Band Stop Pin.....	36	4	.45
E-1-191	Rear Axle Internal Brake Band Stop Pin.....	37	2	.60
E-1-192	Rear Axle Internal Brake Band Clip Guide.....	38	2	.10
E-1-141 †	Rear Axle Propeller Shaft Stud.....	39	6	.15*
E-1-142 †	Rear Axle Propeller Shaft Stud Nut.....	40	6	.05
E-1-124 †	Rear Axle Gear Case Inner Bearing Sleeve.....	41	2	.55
E-1-132 †	Rear Axle Gear Case Outer Bearing Sleeve.....	42	2	.40
E-1-165	Rear Axle Gear Case Spring Seat Anchor Plate.....		2	.15

* Revised and corrected July 5, 1916.

REAR AXLE—ROLLER BEARING TYPE—Continued

Used on all models except where noted.

Part No.	NAME OF PARTS	Illustration No.	No. Req.	Price Each
559	Rear Axle Gear Case Plug.....		2	\$0.15
E-1-243	Rear Axle Spring Seat Assembly (Includes Parts E-1-167 to X-30-104, inclusive).....		2	2.60
E-1-167	Rear Axle Spring Seat.....	44	2	1.65
E-1-166	Rear Axle Spring Seat Cap.....	45	2	.65
X-27-143	Rear Axle Spring Seat Bolt.....	46	4	.10
X-30-104	Rear Axle Spring Seat Bolt Nut.....		4	.05
490	Rear Axle Gear Case Truss Rod (Standard Tread).....	47	1	.45
E-1-342	Rear Axle Gear Case Truss Rod (60-inch Tread).....		1	.45
E-1-232	Rear Axle Gear Case Tube (60-inch Tread).....		2	5.00
X-19-115	Rear Axle Gear Case Grease Cup.....	48	4	
24-E-62	Rear Axle Differential Case—Right.....	49	1	20.00
24-E-63	Rear Axle Differential Case—Left.....	50	1	
24-E-64	Rear Axle Differential Case Cap Screw.....		8	.10
24-E-68	Rear Axle Differential Gear.....	51	2	4.75
468	Rear Axle Differential Pinion Journal.....	52	1	3.50
469	Rear Axle Differential Pinion.....	53	4	1.15
24-E-37	Rear Axle Differential Case Bearing Sleeve.....	54	2	1.90
24-E-35	Rear Axle Differential Case Roller Bearing (Complete with Sleeve).....		2	3.85
24-E-36	Rear Axle Differential Case Roller Bearing only.....	55	2	3.10
1564	Rear Axle Differential Case Thrust Bearing Assembly.....		2	1.25
446	Rear Axle Differential Case Thrust Bearing Cups.....	56	2	.60
X-20-109	Rear Axle Differential Case Thrust Bearing Balls.....	57	38	.04
447	Rear Axle Differential Case Thrust Bearing Ring.....	58	2	.40
449	Rear Axle Differential Case Thrust Bearing Snap Ring.....	59	2	.08
E-1-236	Rear Axle Differential Case Thrust Bearing Dust Washer.....	60	2	.10
24-E-488	Rear Axle Differential Case Shim.....		2	.03
25-E-66	Rear Axle Drive Gear and Pinion Set (3½ to 1).....		1	18.00
E-1-333				
25-E-66	Rear Axle Drive Gear (3½ to 1), 48 Teeth.....	61	1	
E-1-333	Rear Axle Drive Pinion (3½ to 1), 13 Teeth.....	62	1	6.75
25-E-113	Rear Axle Drive Gear and Pinion Set (4 to 1).....		1	18.00
E-1-335				
25-E-113	Rear Axle Drive Gear (4 to 1), 48 Teeth.....		1	
E-1-335	Rear Axle Drive Pinion (4 to 1), 12 Teeth.....		1	6.75
E-1-106	Rear Axle Drive Shaft—Standard Tread.....	63	2	3.55
E-1-312	Rear Axle Drive Shaft—60-inch Tread.....		2	4.00
560	Rear Axle Drive Shaft Nut—Inner.....	64	2	.20
24-E-59	Rear Axle Drive Shaft Nut—Outer.....	65	2	.20
E-1-111	Rear Axle Drive Shaft Key.....	66	2	.15
E-1-129	Rear Axle Drive Shaft Outer Roller Bearing—Complete with Sleeve.....		2	2.70
E-1-129	Rear Axle Drive Shaft Outer Roller Bearing only.....	67	2	2.30
E-1-133	Rear Axle Drive Shaft Dust Washer.....	68	2	.05
E-1-134	Rear Axle Drive Shaft Dust Washer Cage.....	69	2	.05
E-1-135	Rear Axle Drive Shaft Dust Retaining Ring.....	70	2	.05
E-1-136	Rear Axle Drive Shaft Inner Collar.....	71	2	.30
E-1-139	Rear Axle Gear Case Bolt.....	72	8	.05
E-1-140	Rear Axle Gear Case Bolt Nut.....	73	6	.03
E-1-244	Rear Axle Propeller Shaft and Casing Assembly (Used on R. only) (Includes Parts E-1-160, E-1-162 to E-1-155, E-1-156, E-1-157, E-1-147, E-1-152, E-1-143 and E-1-237, inclusive).....		1	27.50
E-1-326	Rear Axle Propeller Shaft and Casing Assembly (Used on T.C. and F.R. only) (Includes Parts E-1-249 to E-1-163, E-1-248, E-1-156, E-1-157, E-1-147, E-1-152, E-1-143 and E-1-237, inclusive).....		1	30.00
E-1-245	Rear Axle Propeller Shaft Casing Assembly (Used on R. only) (Includes Parts E-1-160, E-1-162 to E-1-163, inclusive).....		1	11.65
E-1-327	Rear Axle Propeller Shaft Casing Assembly (Used on T.C. and F.R. only) (Includes Parts E-1-249 to E-1-163, inclusive).....		1	11.65
E-1-160	Rear Axle Propeller Shaft Case Tube (Used on R. only).....		1	5.00
E-1-249	Rear Axle Propeller Shaft Tube (Used on T.C. and F.R. only).....	74	1	5.00
E-1-162	Rear Axle Propeller Shaft Case Flange.....	75	1	3.75
E-1-159	Rear Axle Propeller Shaft Tube Outer Collar—Front End.....	76	1	.20
E-1-150	Rear Axle Propeller Shaft Rear Bearing Outer Sleeve.....	77	1	.60
E-1-163	Rear Axle Propeller Shaft Case Oil Hole Plug.....		1	.10
E-1-155	Rear Axle Propeller Shaft (Used on R. only).....		1	5.00
E-1-248	Rear Axle Propeller Shaft (Used on T.C. and F.R. only).....	78	1	7.50
E-1-247	Rear Axle Propeller Shaft Drive Pinion Key.....	79	1	.15
E-1-156	Rear Axle Propeller Shaft Nut.....	80	1	.20
E-1-157	Rear Axle Propeller Shaft Washer.....	81	1	.05
E-1-260	Rear Axle Propeller Shaft Pinion Shim.....		1	.05
E-1-147	Rear Axle Propeller Shaft Pinion Roller Bearing—Complete with Sleeve.....		1	5.20
E-1-147	Rear Axle Propeller Shaft Pinion Roller Bearing only.....	82	1	2.65
E-1-151	Rear Axle Propeller Shaft Pinion Roller Bearing Inner Sleeve.....	83	1	1.95
24-E-6	Rear Axle Propeller Shaft Front Roller Bearing.....	84	1	2.50
E-1-143	Rear Axle Propeller Shaft Thrust Bearing Assembly (Includes Parts E-1-144 to X-20-109, inclusive).....		2	1.45
E-1-144	Rear Axle Propeller Shaft Thrust Bearing Ball Cup.....	85	1	.60
E-1-145	Rear Axle Propeller Shaft Thrust Bearing Thrust Washer.....	86	1	.10
E-1-146	Rear Axle Propeller Shaft Thrust Bearing Snap Ring.....	87	1	.05
534	Rear Axle Propeller Shaft Thrust Bearing Ball.....	88	18	.01
87	Rear Axle Propeller Shaft Grease Cup.....		2	.10
E-1-237	Rear Axle Propeller Shaft Grease Cup Dust Washer.....	89	1	.10

Revised and corrected Feb. 21, 1916.

REAR AXLE—PLAIN BEARING TYPE PARTS

Used on T. C. and F. R. only.

Part No.	NAME OF PARTS	Illustration No.	No. Req.	Price Each
E-1-271	Rear Axle Gear Case Tube.....	2		\$6.00
E-1-256	Rear Axle Gear Case Bearing.....	2		2.75
E-1-282	Rear Axle Gear Case Bearing Dowel.....	2		.02
E-1-299	Rear Axle Differential Case—Right.....	1		10.50
E-1-300	Rear Axle Differential Case—Left.....	1		12.50
E-1-284	Rear Axle Differential Gear.....	2		6.00*
E-1-298	Rear Axle Differential Journal.....	1		3.50
E-1-291	Rear Axle Differential Pinion.....	4		2.85
E-1-254	Rear Axle Differential Case Bearing Sleeve.....	2		3.25
E-1-281	Rear Axle Differential Case Bearing Sleeve Dowel.....	2		.02
E-1-251	Rear Axle Differential Case Thrust Bearing Ball Retainer with Balls.....	2		1.50
E-1-252	Rear Axle Differential Case Thrust Bearing Ball Race.....	4		1.25
E-1-318	Rear Axle Differential Case Thrust Bearing Shim .005.....	2		.05
E-1-320	Rear Axle Differential Case Thrust Bearing Shim .015.....	2		.05
E-1-297	Rear Axle Drive Gear and Pinion Set (3½ to 1).....	1		18.00
E-1-296	Rear Axle Drive Gear (3½ to 1).....	1		18.00
E-1-297	Rear Axle Drive Pinion (3½ to 1).....	1		6.75
E-1-296	Rear Axle Drive Gear and Pinion Set (4 to 1).....	1		18.00
E-1-292	Rear Axle Drive Gear (4 to 1).....	1		18.00
E-1-295	Rear Axle Drive Pinion (4 to 1).....	1		6.75
E-1-283	Rear Axle Drive Shaft.....	2		5.85
E-1-255	Rear Axle Drive Shaft Bearing Sleeve.....	2		1.75
E-1-257	Rear Axle Drive Shaft Bearing.....	2		2.75
E-1-129	Rear Axle Drive Shaft Outer Roller Bearing.....	2		2.70
E-1-313	Rear Axle Drive Shaft Retainer Washer.....	6		.05
E-1-133	Rear Axle Drive Shaft Dust Washer.....	2		.05
E-1-259	Rear Axle Drive Shaft Stuffing Nut.....	2		.75
E-1-258	Rear Axle Drive Shaft Stuffing Nut Lock Wire.....	2		.05
E-1-269	Rear Axle Propeller Shaft Case—Front.....	1		4.75
E-1-270	Rear Axle Propeller Shaft Case—Rear.....	1		3.25
TIM-E-1-276	Rear Axle Propeller Shaft Rear Bearing Sleeve.....	1		1.25
TIM-E-1-285	Rear Axle Propeller Shaft Rear Bearing.....	1		4.95
E-1-277	Rear Axle Propeller Shaft Rear Bearing Adjusting Nut.....	1		4.25
E-1-253	Rear Axle Propeller Shaft Rear Bearing Adjusting Nut Lock Screw.....	1		.05
E-1-260	Rear Axle Propeller Shaft Pinion Shim .125.....	1		.05
E-1-261	Rear Axle Propeller Shaft Pinion Shim .0625.....	1		.05
E-1-262	Rear Axle Propeller Shaft Pinion Shim .03125.....	1		.05
E-1-263	Rear Axle Propeller Shaft Pinion Shim .005.....	1		.05
TIM-6619	Rear Axle Propeller Shaft Front Bearing.....	1		4.35
E-1-287	Rear Axle Propeller Shaft Front Bearing Dust Washer Retainer.....	1		.70
E-1-288	Rear Axle Propeller Shaft Front Bearing Dust Washer.....	1		.15
E-1-264	Rear Axle Propeller Shaft Oil Retainer Ring.....	1		.30
E-1-265	Rear Axle Propeller Shaft Oil Retainer Washer.....	1		.25
E-1-266	Rear Axle Propeller Shaft Oil Retainer Cage.....	1		1.30
E-1-268	Rear Axle Propeller Shaft.....	1		8.75
E-1-267	Rear Axle Propeller Shaft Tube.....	1		3.50

BRAKES

Used on all models except where noted.

E-1-197	External Brake Band Assembly (Covers only) (Parts E-1-172 to E-1-174, inclusive).....	2		\$3.50
E-1-172	External Brake Band.....	95	2	.75
E-1-173	External Brake Band Lining, ½" x 2" x 31½".....	96	2	1.25
E-1-174	External Brake Band Clip.....	97	4	.75
E-1-175	External Brake Band Clip Pin.....	98	6	.05
E-1-176	External Brake Toggle Link.....	99	2	.55
E-1-177	External Brake Band Lever—Right.....	100	1	.65
E-1-178	External Brake Band Lever—Left.....	101	1	.65
E-1-196	Internal Brake Band Assembly (Covers only Parts E-1-181 to E-1-183, inclusive).....	2		2.60
E-1-181	Internal Brake Band.....	102	2	.60
E-1-182	Internal Brake Band Lining, ½" x 1¾" x 20¼".....	103	2	1.20
E-1-183	Internal Brake Band Clip.....	104	4	.40
503	Internal Brake Band Clip Pin.....	105	4	.05
E-1-187	Internal Brake Band Clip Spring.....	106	2	.05
E-1-185	Internal Brake Band Toggle Link—Outer.....	107	2	.15
E-1-186	Internal Brake Band Toggle Link—Inner.....	108	2	.15
E-1-188	Internal Brake Band Toggle Link Pin.....	109	2	.05
E-1-189	Internal Brake Operating Link.....	110	2	.50
E-1-193	Internal Brake Cam Shaft.....	111	2	1.25
E-1-190	Internal Brake Cam Shaft Pin.....	112	2	.05
E-1-195	Internal Brake Cam Shaft Operating Lever.....	113	2	.75
E-1-307	Internal Brake Band Clip Pin.....	4		.10
E-1-308	Internal Brake Band Clip Spring.....	2		.05

* Revised and corrected July 5, 1916.

PROPELLER SHAFT UNIVERSAL JOINT—SPICER

Used on all models except where noted.

Part No.	NAME OF PARTS	Illustration No.	No. Req.	Price Each
B-6-105	Universal Joint Assembly (Includes Parts B-6-116 to 122, inclusive).....	1	1	\$12.50
B-6-116	Universal Joint Compression Flange.....	1	1	2.25
B-6-115	Universal Joint Flange Yoke.....	1	1	2.30
B-6-111	Universal Joint Sleeve Yoke.....	1	1	6.25
B-6-112	Universal Joint Journal.....	1	1	1.10
B-6-113	Universal Joint Journal Bushing—Grooved.....	2	2	.25
B-6-126	Universal Joint Journal Bushing—Plain.....	2	2	.30
B-6-114	Universal Joint Journal Bushing Retainer.....	4	4	.10
B-6-118	Universal Joint Inside Casing.....	1	1	.70
B-6-119	Universal Joint Outside Casing.....	1	1	.70
B-6-120	Universal Joint Outside Casing—Packing.....	1	1	.20
B-6-121	Universal Joint Outside Casing Lock Nut.....	1	1	.55
B-6-123	Universal Joint Dust Cap.....	1	1	.70
B-6-122	Universal Joint Felt Washer.....	1	1	.15
1078	Universal Joint Flange Bolt.....	6	6	.05
122	Universal Joint Flange Bolt Nut.....	6	6	.05 doz.

FRONT WHEELS

Used on all models except where noted.

E-2-103	Front Wheel Assembly—32" x 3"—(Includes Parts E-2-117 to E-2-113, inclusive).....	2)	Prices on Application
E-2-135	Front Wheel Assembly—32" x 3½"—(Includes Parts E-2-117 to E-2-113, inclusive).....	2)	Prices on Application
E-2-117	Front Wheel Hub.....	15	2 \$4.75
E-2-126	Front Wheel Hub Flange.....	116	2 .45
145	Front Wheel Hub Bolt.....	117	10 .05
E-2-113	Front Wheel Hub Bolt Nut.....	118	10 .03
24-E-176	Front Wheel Inner Bearing Assembly (Includes Parts 24-E-207 to 24-E-208, inclusive).....	119	2 1.20
24-E-207	Front Wheel Inner Bearing Cup.....	2	2 .40
57	Front Wheel Inner Bearing Ball.....	22	2 .07
24-E-208	Front Wheel Inner Bearing Snap Ring.....	2	2 .05
24-E-177	Front Wheel Outer Bearing Assembly (Includes Parts 24-E-205 to 24-E-210, inclusive).....	120	2 .75
24-E-205	Front Wheel Outer Bearing Cup.....	2	2 .20
58	Front Wheel Outer Bearing Ball.....	20	2 .07
24-E-206	Front Wheel Outer Bearing Snap Ring.....	2	2 .05
24-E-209	Front Wheel Inner Bearing Dust Washer.....	121	2 .05
24-E-210	Front Wheel Inner Bearing Dust Washer Cage.....	122	2 .10

REAR WHEELS

E-2-104	Rear Wheel Assembly—32" x 3½"—(Includes Parts E-2-110 to E-2-113, inclusive).....	2)	Prices on Application
E-2-110	Rear Wheel Hub.....	124	2 \$5.50*
E-2-111	Rear Wheel Brake Drum.....	125	2 1.75
145	Rear Wheel Hub Bolt.....	126	12 .05
E-2-113	Rear Wheel Hub Bolt Nut.....	127	12 .03
E-2-127	Front and Rear Wheel Hub Cap.....	128	4 .45

STEERING GEAR

Used on all models except where noted.

F-1-112	Steering Gear Assembly (Used on R. only) (Includes Parts F-1-123, F-1-134 to F-1-121, F-1-126, F-1-131 to F-1-141, F-1-111, F-1-132, F-1-133, F-1-142 to F-1-136, F-1-138, to F-1-152, F-1-137, F-1-145 to F-1-153, F-1-149 to F-1-150, F-1-155, F-1-151, F-1-157 to F-1-218, F-1-139 and X-17-108, inclusive).....	1	\$45.00
F-1-212	Steering Gear Assembly (Used on T.C. and F.R. only) (Includes Parts F-1-213 to F-1-127, F-1-209 to X-19-116, F-1-124 to F-1-120, F-1-207, F-1-228 and F-1-201, F-1-132, F-1-208 to X-31-202, F-1-206 to F-1-144, F-1-233, F-1-211 to F-1-147, F-1-232 to F-1-154, F-1-231, F-1-155, F-1-234 to F-1-218, F-1-139 and X-17-108, inclusive).....	1	45.00
F-1-123	Steering Gear Main Tube (Used on R. only).....	130	1 4.50
F-1-213	Steering Gear Main Tube (Used on T.C. and F.R. only).....	1	4.50
F-1-134	Steering Gear Main Tube Bushing—Long.....	131	1 .15
F-1-181	Steering Gear Main Tube Bushing—Short.....	132	1 .10
427	Steering Gear Worm.....	133	1 2.40
X-18-103	Steering Gear Worm Key.....	134	1 .10
F-1-127	Steering Gear Worm Thrust Washer.....	135	2 .45
F-1-122	Steering Gear Case—Upper Half (Used on R. only).....	136	1 3.75
F-1-121	Steering Gear Case—Lower Half (Used on R. only).....	137	1 3.75
F-1-209	Steering Gear Case—Upper Half (Used on T.C. and F.R. only).....	1	3.75
F-1-210	Steering Gear Case—Lower Half (Used on T.C. and F.R. only).....	1	3.75
F-1-126	Steering Gear Worm Adjusting Nut.....	138	1 2.40
F-1-214	Steering Gear Worm Adjusting Nut Lock (Used on T.C. and F.R. only).....	1	.20
F-1-131	Steering Gear Lower Case Bushing.....	139	1 .70
231	Steering Gear Case Oil Hole Plug ¼".....	140	1 .03
X-19-116	Steering Gear Worm Adjusting Nut Oiler.....	141	1 .15
61	Steering Gear Case Grease Cup.....	142	1 .15

★ Revised and corrected July 5, 1916.

STEERING GEAR—Continued

Used on all models except where noted.

Part No.	NAME OF PARTS	Illustration No.	No. Req.	Price Each
F-1-124	Steering Gear Worm Wheel.....	143	1	\$3.50
F-1-128	Steering Gear Worm Wheel Shaft.....	144	1	1.30
X-17-115	Steering Gear Worm Wheel Key No. 15.....	145	1	.10
F-1-129	Steering Gear Worm Wheel Shaft Bushing—Long.....	146	2	.60
F-1-130	Steering Gear Worm Wheel Shaft Bushing—Short.....	147	1	.45
F-1-159	Steering Gear Worm Wheel Thrust Washer.....	148	2	.40
F-1-116	Steering Gear Lever.....	149	1	2.75
F-1-119	Steering Gear Lever Clamp Bolt.....	150	1	.10
F-1-120	Steering Gear Lever Clamp Bolt Nut.....	151	1	.10
F-1-141	Steering Gear Jacket Tube (Used on R. only).....	152	1	3.25
F-1-207	Steering Gear Jacket Tube (Used on T.C. and F.R. only).....	1	1	3.25
F-1-111	Steering Gear Dash Bracket (Used on R. only).....	153	1	1.50
F-1-228	Steering Gear Dash Bracket (Used on T.C. and F.R. only).....	1	1	1.80
F-1-201	Steering Gear Dash Bracket Nut (Used on T.C. and F.R. only).....	1	1	.45
F-1-226	Steering Gear Floor Plate (Used on R. only).....	1	1	1.80
F-1-132	Steering Gear Sector Tube Clamp.....	154	1	.45
F-1-133	Steering Gear Sector Tube (Used on R. only).....	155	1	1.50
F-1-208	Steering Gear Sector Tube (Used on T.C. and F.R. only).....	1	1	1.50
F-1-142	Steering Gear Hand Lever Sector Bracket.....	156	1	1.35
F-1-135	Steering Gear Sector Tube Bushing.....	157	2	.16
F-1-143	Steering Gear Hand Lever Sector.....	158	1	.75
X-23-202	Steering Gear Hand Lever Sector Screw.....	159	2	.01
X-31-202	Steering Gear Hand Lever Sector Screw Nut.....	160	2	.01
F-1-136	Steering Gear Throttle Control Tube (Used on R. only).....	161	1	1.35
F-1-206	Steering Gear Throttle Control Tube (Used on T.C. and F.R. only).....	1	1	1.35
F-1-138	Steering Gear Throttle Control Tube Bushing.....	162	2	.10
F-1-144	Steering Gear Throttle Control Hand Lever.....	163	1	.90
F-1-152	Steering Gear Throttle Control Tube Pinion (Used on R. only).....	164	1	.40
F-1-233	Steering Gear Throttle Control Tube Pinion (Used on T.C. only).....	1	1	.60
F-1-137	Steering Gear Spark Control Rod (Used on R. only).....	165	1	.30
F-1-211	Steering Gear Spark Control Rod (Used on T.C. and F.R. only).....	1	1	.30
F-1-145	Steering Gear Spark Control Hand Lever.....	166	1	.75
388	†* Steering Gear Control Hand Lever Ratchet Pin.....	167	2	.05
F-1-147	Steering Gear Control Hand Lever Ratchet Pin Spring.....	168	2	.05
F-1-153	Steering Gear Spark Control Rod Pinion (Used on R. only).....	169	1	.40
F-1-232	Steering Gear Spark Control Rod Pinion (Used on T.C. and F.R. only).....	1	1	.60
F-1-149	Steering Gear Spark and Throttle Control Gear Bracket.....	170	1	.45
F-1-154	Steering Gear Throttle Control Tube—Short.....	171	1	.25
F-1-243	Steering Gear Throttle Control Tube Bushing.....	172	2	.10
F-1-150	Steering Gear Throttle Control Tube Gear (Used on R. only).....	173	1	.60
F-1-231	Steering Gear Throttle Control Tube Gear (Used on T.C. and F.R. only).....	1	1	.60
F-1-155	Steering Gear Shaft Control Rod—Short.....	170	1	.10
F-1-151	Steering Gear Spark Control Rod Gear (Used on R. only).....	175	1	.60
F-1-234	Steering Gear Spark Control Rod Gear (Used on T.C. and F.R. only).....	1	1	.40
F-1-157	Steering Gear Throttle Control Lever.....	176	1	.45
F-1-156	Steering Gear Spark Control Lever.....	177	1	.45
F-1-218	Steering Wheel Assembly, 18" (Includes Parts F-1-161 and F-1-229).....	178	1	5.50
F-1-161	Steering Wheel Spider, 18" } Not Sold Separately.....	1	1	5.50
F-1-229	Steering Wheel Rim, 18" }	1	1	
F-1-139	Steering Wheel Nut.....	179	1	.50
115	* Steering Wheel Nut Key No. 9 Woodruff.....	2	2	.02

DRAG LINK

F-1-108	Steering Gear Drag Link Tube.....	} Not Sold Separately.....	1	\$2.00
F-1-109	Steering Gear Drag Link Tube Socket—Front.....			
F-1-106	Steering Gear Drag Link Tube Socket—Rear.....			
F-1-102	Steering Gear Drag Link Ball Seat.....	4	4	.30
F-1-103	Steering Gear Drag Link Ball Seat Spring.....	2	2	.15
F-1-100	Steering Gear Drag Link Adjusting Nut.....	2	2	.25
F-1-237	Steering Gear Drag Link Boot—Front.....	1	1	.30
F-1-236	Steering Gear Drag Link Boot—Rear.....	1	1	.30

CONTROL LEVERS

Used on all models except where noted.

B-5-116	Brake and Control Lever Bracket.....	1	1	\$2.75
B-5-117	Control Lever Gate.....	1	1	.75
K-2-104	Brake Lever Ratchet Plate.....	1	1	1.00
X-26-139	Brake & Control Lever Bracket Cap Screw Brass Plated 3/8" x 2" Hex. Head.....	2	2	.10
K-2-105	Brake Hand Lever.....	1	1	3.50
K-2-107	Brake Hand Lever Latch Rod.....	1	1	1.20
K-2-108	Brake Hand Lever Latch Rod Button.....	1	1	.15
K-2-109	Brake Hand Lever Latch Rod Spring.....	1	1	.05
X-24-202	Brake Hand Lever Latch Rod Screw.....	2	2	.02
X-32-110	Brake Hand Lever Latch Rod Headless Set Screw.....	2	2	.05

CONTROL LEVERS—Continued

Used on all models except where noted.

Part No.	NAME OF PARTS	Illustration No.	No. Req.	Price Each
K-2-106	Brake Hand Lever Shaft.....		1	\$.65
K-1-104	Brake Hand Lever Shaft End Lever.....		1	.60
X-17-113	Brake Hand Lever Shaft End Lever Key.....		1	.05
302	Brake Hand Lever Shaft End Lever Pin.....		1	.03
B-5-118	Control Hand Lever.....		1	3.50
B-5-119	Control Hand Lever Shaft.....		1	1.00
B-5-120	Control Hand Lever Shaft Bushing.....		1	.25
B-5-121	Control Hand Lever Shaft Shifting Finger.....		1	1.30

NOTE.—Brake and Control Levers bent for Foredoor Roadster.

PEDAL CONTROL

Used on all models except where noted.

C-2-104	Clutch Pedal (Used on R. only).....	1	\$1.75
C-2-113	Clutch Pedal (Used on T.C. and F.R. only).....	1	1.75
K-1-100	Brake Pedal.....	1	1.75
C-2-111	Clutch and Brake Pedal Cross Shaft (Used on R. only).....	1	1.35
C-2-115	Clutch and Brake Pedal Cross Shaft (Used on T.C. and F.R. only).....	1	1.75
D-2-120	Clutch and Brake Pedal Cross Shaft Bracket.....	2	.15
C-2-106	Clutch and Brake Pedal Cross Shaft Collar.....	1	.30
C-2-107	Clutch Pedal Adjusting Lever (Used on R. only).....	1	.85
C-2-110	Clutch Pedal Adjusting Lever Spring (Used on R. only).....	1	.05
C-2-114	Clutch Pedal Adjusting Hub (Used on T.C. and F.R. only).....	1	.25
C-2-108	Clutch Shift Lever.....	2	.20
C-2-109	Clutch Shift Lever Pin.....	2	.20
X-17-113	Clutch and Brake Pedal Cross Shaft, Key No. 13 Woodruff.....	3	.05
X-16-152	Clutch and Brake Pedal Cross Shaft Taper Pin No. 4 x 1½".....	2	.05
C-2-103	Clutch Throwout Yoke.....	1	1.50
X-19-100	Clutch Throwout Yoke Grease Cup.....	1	.15
H-3-111	Clutch Throwout Yoke Grease Cup Extension.....	1	.20

BRAKE ROD CONTROL

Used on all models except where noted.

K-1-114	External Brake Pull Rod, Brake Pedal to Cross Shaft (Used on R. only).....	1	\$.50
K-1-117	External Brake Pull Rod, Brake Pedal to Cross Shaft (Used on T.C. and F.R. only).....	1	.50
K-1-113	External Brake Pull Rod, Cross Shaft to Rear Axle.....	2	.45
K-2-112	Internal Brake Pull Rod, Hand Brake to Cross Shaft (Used on R. only).....	1	.45
K-2-118	Internal Brake Pull Rod, Hand Brake to Cross Shaft (Used on T.C. and F.R. only).....	1	.50
K-2-113	Internal Brake Pull Rod, Cross Shaft to Rear Axle.....	2	.50
K-1-109	External and Internal Brake Pull Rod Clevis.....	6	.30
747	External and Internal Brake Pull Rod Clevis Pin.....	6	.03
X-6-102	External and Internal Brake Pull Rod End Pin.....	6	.02
K-1-101	External and Internal Brake Cross Shaft.....	2	.75
K-1-108	External and Internal Brake Cross Shaft Strut.....	2	.10
K-1-104	External and Internal Brake Cross Shaft Levers (Outside).....	4	.60
K-1-105	External and Internal Brake Cross Shaft Levers (Inside).....	2	.75
X-17-113	External and Internal Brake Cross Shaft Key No. 13 Woodruff.....	6	.05
302	External and Internal Brake Cross Shaft Taper Pin, No. 3 x 1¼".....	7	.02
K-1-112	Brake Release Spring.....	1	.10

SPARK AND THROTTLE CONTROL

Used on all models except where noted.

I-4-104	Spark and Throttle Control Dash Cross Rod.....	1	\$.10
I-4-103	Spark and Throttle Control Dash Bracket.....	2	.25
I-4-102	Spark and Throttle Control Dash Cross Rod Magneto Lever.....	1	.20
I-4-101	Spark and Throttle Control Dash Cross Rod Timer Bell Crank.....	1	.35
J-3-100	Throttle Control Lever Bell Crank.....	1	.50
I-4-100	Spark and Throttle Control Dash Cross Shaft Collar.....	1	.35
I-4-116	Spark Control Rod Assembly (Bell Crank to Timer) (Includes Parts 1593, X-31-200, I-4-122, X-22-101 and X-31-204, inclusive).....	1	.55
1593	Spark Control Rod (Bell Crank to Timer).....	1	.05
I-4-117	Spark Control Rod Assembly (Cross Shaft to Magneto) (Includes Parts I-4-124, X-31-200, I-4-122, X-22-101 and X-31-204, inclusive).....	1	.55
I-4-124	Spark Control Rod (Cross Shaft Lever to Magneto).....	1	.05
I-4-118	Spark Control Rod Assembly (Steering Gear to Bell Crank) (Used on R. only) (Includes Parts I-4-125, X-31-200, I-4-122, X-22-101 and X-31-204, inclusive).....	1	.55
I-4-125	Spark Control Rod (Steering Gear to Bell Crank) (Used on R. only).....	1	.05
I-4-127	Spark Control Rod Assembly (Steering Gear to Bell Crank) (Used on T.C. and F.R. only) (Includes Parts I-4-126, X-31-200, I-4-122, X-22-101 and X-31-204, inclusive).....	1	.50

Revised and corrected Feb. 21, 1916.

SPARK AND THROTTLE CONTROL—Continued

Used on all models except where noted.

Part No.	NAME OF PARTS	Illustration No.	No. Req.	Price Each
I-4-126	Spark Control Rod (Steering Gear to Bell Crank) (Used on T.C. and F.R. only).....		1	\$.05
J-3-109	Throttle Control Rod Assembly (Bell Crank to Carburetor) (Includes Parts J-3-110, X-6-100, X-15-100, X-30-100, X-5-100, J-3-106, J-3-107 and X-21-101, inclusive).....		1	.90
J-3-110	Throttle Control Rod (Bell Crank to Carburetor).....		1	.50
J-3-117	Throttle Control Rod Assembly (Steering Gear to Bell Crank) (Used on R. only) (Includes Parts J-3-118, X-31-200, I-4-122, X-22-101 and X-31-204, inclusive).....		1	.40
J-3-118	Throttle Control Rod (Steering Gear to Bell Crank) (Used on R. only).....		1	.05
J-3-124	Throttle Control Assembly (Steering Gear to Bell Crank) (Used on T.C. and F.R. only) (Includes Parts J-3-123, X-31-200, I-4-122, X-22-101 and X-31-204, inclusive).....		1	.40
J-3-123	Throttle Control Rod (Steering Gear to Bell Crank) (Used on T.C. and F.R. only).....		1	.05
J-3-102	Accelerator Pedal Rod Assembly (Used on R. only) (Includes Parts J-3-108, X-6-101, X-15-100 and J-3-103, inclusive).....		1	.50
J-3-108	Accelerator Rod (Used on R. only).....		1	.10
J-3-103	Accelerator Rod Button (Used on R. only).....		1	.35
J-3-119	Accelerator Pedal Rod Assembly (Used on T.C. and F.R. only) (Includes Parts X-4-101, X-30-101 and X-5-101, inclusive).....		1	.80
J-3-122	Accelerator Rod (Used on T.C. and F.R. only).....		1	.40
J-3-121	Accelerator Pedal (Used on T.C. and F.R. only).....		1	.35
J-3-120	Accelerator Pedal Pin (Used on T.C. and F.R. only).....		1	.05
J-3-106	Throttle Control Rod Eye.....		1	.10
J-3-107	Throttle Control Rod Eye Spring.....		1	.03
X-16-121	No. 2 x 3/4" Taper Pin.....		3	.05
I-4-122	Ball and Socket Joint.....		7	.15
X-5-100	Pull Rod Clevis, 1/8".....		1	.30
X-6-100	Clevis Pin, 3/8".....		1	.03
X-6-101	Clevis Pin, 1/4".....		2	.03
X-5-101	Clevis, 1/4".....		1	.30

MOTOR

Used on all models except where noted.

A-2-119	Motor Assembly (with 1 1/4" Water Connection) (Includes Parts A-2-113 to H-3-115, A-2-109 to A-2-129, A-5-134, A-5-124, A-6-109 to A-2-124, A-6-110 to A-5-139, A-6-111, A-6-112 to 237, M-1-100 to A-1-100, A-1-104, A-4-102, A-1-103, A-1-106, A-1-105 to A-5-156, A-3-104, A-4-110 and 22-H-27, inclusive).....			Prices on Application
22-A-5	Motor Assembly (with 1 1/2" Water Connection) (Includes Parts A-2-113 to H-3-115, A-2-109 to A-2-129, A-5-134, A-5-124, A-6-109 to A-2-124, A-6-110 to A-5-139, A-6-111, A-6-112 to 237, M-1-100 to 534, 22-A-1, A-1-104, 22-A-2, A-1-103, 22-A-6 to A-5-156, A-3-104, A-4-110 and 22-H-27, inclusive).....			Prices on Application
A-2-113	Crank Case—Upper.....	190	1	\$78.75
A-2-112	Crank Case—Lower.....	191	1	52.50
A-2-114	Crank Case Front Bearing Stud.....		2	.15
X-26-158	Crank Case Rear Bearing Bolt.....		2	.10
A-2-102	Crank Case Cylinder Stud.....	192	10	.10
H-3-103	Water Pump Body Clamp.....	193	1	.60
X-24-256	Water Pump Body Clamp Bolt.....	194	2	.03
2369	Crank Case Lower Pipe Plug 1/2".....	195	5	.03
A-2-115	Flywheel Pointer.....	196	1	.10
A-2-125	Crank Case Gear Cover.....	197	1	6.25
A-2-126	Crank Case Gear Cover Packing Nut.....		1	.20
H-2-104	Crank Case Gear Cover Fan Support Stud.....	198	1	.60
X-7-102	Crank Case Gear Cover Pipe Plug 3/8".....		1	.03
X-24-211	Crank Case Gear Cover Cap Screw.....	199	11	.03
A-6-103	Crank Case Idler Gear Stud.....	200	1	.75
I-2-100	Timer Washer.....	201	1	.10
A-2-120	Crank Case Flange Stud.....		2	.10
X-9-102	Crank Case Drain Cock.....		2	.30
A-7-100	Crank Shaft Front Bearing.....	202	1	2.40
A-7-101	Crank Shaft Rear Bearing.....	203	1	2.75
A-7-107	Cam Shaft Front Bearing.....	204	1	2.85
A-7-108	Cam Shaft Middle Bearing.....	205	1	1.90
A-7-104	Cam Shaft Rear Bearing.....	206	1	1.90
X-23-190	Cam Shaft Bearing Screw.....	207	4	.05
A-7-105	Motor Idler Gear Bearing.....	208	1	.30
A-7-106	Water Pump Drive Gear Bearing.....		2	.50
A-7-109	Water Pump Drive Gear Bearing.....	210	1	1.25
H-3-115	Water Pump Drive Gear Bearing Packing Nut.....	311	1	.80
X-25-625	Motor Anchor Bolt (Crank Case to Frame).....	212	4	.10
59	Motor Anchor Bolt Nut.....	213	4	.08
A-2-116	Motor Foot Shim—Thin.....		2	.03
A-2-117	Motor Foot Shim—Medium.....		2	.03
A-2-118	Motor Foot Shim—Thick.....		2	.03
A-2-128	Vent Tube Assembly (Includes Parts A-2-109 to A-2-111, inclusive).....		1	1.50
A-2-109	Vent Tube.....	214	1	.85
A-2-110	Vent Tube Cap.....	215	1	.40
A-2-111	Vent Tube Stud.....	216	1	.20

Revised and corrected Feb. 21, 1916.

MOTOR—Continued

Used on all models except where noted.

Part No.	NAME OF PARTS	Illustration No.	No. Req.	Price Each
CRANK SHAFT AND CAM SHAFT				
A-2-100	Crank Shaft.....	217	1	\$50.00
A-2-107	* Crank Shaft Dust Washer.....	218	1	.05
C-1-118	Crank Shaft Rear End Nut.....	219	1	.30
A-2-104	Crank Shaft Jaw.....	220	1	2.75
A-2-105	Crank Shaft Jaw Shim—Thin.....	1	1	.03
A-2-106	Crank Shaft Jaw Shim—Thick.....	1	1	.03
A-2-129	Crank Shaft Felt Washer.....	221	1	.20
A-5-151	Cam Shaft Assembly, less Bearings (Includes Parts A-5-128 to A-5-124, inclusive).....	222	1	36.50
A-5-128	Cam Shafts (without Cams).....	1	1	13.75
A-5-126	Cam Shaft Inlet Cam.....	4	1	1.95
A-5-127	Cam Shaft Exhaust Cam.....	4	1	1.95
M-1-109	Cam Shaft Oil Pump Cam.....	1	1	1.75
A-5-123	Cam Shaft Spacer.....	1	1	.20
A-5-124	Cam Shaft Thrust Washer.....	223	1	.40
TIMING GEARS				
A-6-105	Crank Shaft Gear (Spur Type) (Standard to oversize).....	1	1	3.75
A-6-109	Crank Shaft Gear (Helical Type) (Standard to oversize).....	224	1	5.50
X-18-100	† Crank Shaft Gear Key.....	225	1	.05
A-2-124	Crank Shaft Gear Washer.....	1	1	.40
A-6-106	Cam Shaft Gear (Spur Type) (Standard to oversize).....	1	1	3.75
A-6-110	Cam Shaft Gear (Helical Type) (Standard to oversize).....	226	1	5.75
A-5-140	Cam Shaft Gear Lock Plate.....	1	1	.10
A-5-139	Cam Shaft Gear Cap Screw.....	227	3	.15
A-6-107	Motor Idler Gear (Spur Type) (Standard to oversize).....	1	1	3.75*
A-6-111	Motor Idler Gear (Helical Type) (Standard to oversize).....	228	1	3.50
A-6-108	Water Pump Drive Gear (Spur Type) (Standard to oversize).....	1	1	2.75
A-6-112	Water Pump Drive Gear (Helical Type) (Standard to oversize).....	229	1	3.50
H-2-103	Fan Drive Pulley.....	230	1	1.75
X-18-100	Fan Drive Pulley Key.....	1	1	.05
A-2-101	Flywheel.....	231	1	18.00
237	* Flywheel Bolt.....	232	6	.08
I-2-101	Timer Assembly (Includes Parts I-2-102 to I-2-124, inclusive).....	1	1	4.75
I-2-102	Timer Body.....	233	1	1.80
I-2-104	Timer Outer Insulating Ring.....	1	1	.25
I-2-105	Timer Inner Insulating Ring.....	1	1	.40
I-2-106	Timer Insulating Ring Screw.....	4	1	.10
I-2-103	Timer Contact Block.....	4	1	.05
I-2-108	Timer Contact Block Stud.....	4	1	.10
I-2-107	Timer Contact Block Insulator.....	4	1	.05
I-2-109	Timer Contact Block Stud Insulator.....	4	1	.10
I-2-110	Timer Contact Block Lock Nut.....	4	1	.03
I-2-111	Timer Contact Block Knurled Nut.....	4	1	.10
I-2-112	Timer Cover.....	234	1	.55
I-2-113	Timer Cover Nut.....	4	1	.10
I-2-124	Timer Contact Roller Arm Assembly (Includes Parts I-2-114 to X-32-101, inclusive)...	235	1	1.40
I-2-114	Timer Contact Roller.....	1	1	.30
I-2-115	Timer Contact Roller Pin.....	1	1	.05
I-2-116	Timer Contact Roller Arm.....	1	1	.55
I-2-117	Timer Contact Roller Arm Pin.....	1	1	.03
I-2-118	Timer Contact Roller Arm Spring.....	1	1	.10
I-2-119	Timer Contact Roller Arm Bracket.....	1	1	.55
X-32-101	Timer Contact Roller Arm Bracket Set Screw.....	236	1	.03
OIL PUMP				
M-1-106	Oil Pump Assembly (Includes Parts M-1-100 to 534, inclusive).....	1	1	6.75
M-1-100	Oil Pump Cylinder.....	237	1	1.00
M-1-101	Oil Pump Piston.....	238	1	1.95
M-1-107	Oil Pump Spring.....	239	1	.10
M-1-103	Oil Pump Outlet Elbow.....	1	1	.95
M-1-108	Oil Pump Outlet Pipe.....	1	1	1.15
M-1-105	Oil Pump Strainer.....	240	1	.20
M-1-102	Oil Pump Lower Check Valve.....	241	1	.45
M-1-104	Oil Pump Upper Check Valve.....	242	1	.45
534	* Oil Pump Check Valve Ball.....	243	2	.01
CYLINDER				
A-1-100	Cylinder Block (with 1¼" Water Connections) (Standard and .020 oversize (with A-5-101, A-1-109 and A-5-116, inclusive).....	<div> <div>Prices on Application</div> <div>Prices on Application</div> </div>		
22-A-1	Cylinder Block (with 1½" Water Connections) (Standard and .020 oversize) (with A-5-101, A-1-109 and A-5-116, inclusive).....			
A-1-104	Cylinder Gasket.....	245	1	.10
A-1-102	Cylinder Cover (with 1¼" Water Connection).....	1	1	4.50
22-A-2	Cylinder Cover (with 1½" Water Connection).....	246	1	4.50

* Revised and corrected July 5, 1916.

MOTOR—Continued

Used on all models except where noted.

Part No.	NAME OF PARTS	Illustration No.	No. Req.	Price Each
CYLINDER—Continued				
A-1-103	Cylinder Cover Gasket (Mobloline Packing).....	247	1	\$0.75
A-1-106	Cylinder Cover Stud (Used on Cylinder A-1-100).....		4	.20
22-A-6	Cylinder Cover Stud—Short(Used on Cylinder 22-A-1).....		1	.15
22-A-7	Cylinder Cover Stud—Medium (Used on Cylinder 22-A-1).....	248	1	.15
22-A-8	Cylinder Cover Stud—Long (Used on Cylinder 22-A-1).....		1	.20
A-1-105	Cylinder Cover Stud Gasket.....		4	.05
A-1-109	Cylinder Head Core Point Plug.....	249	4	.30
A-5-116	Exhaust and Inlet Manifold Stud.....	250	10	.10
A-5-110	Exhaust and Inlet Port Plug.....	251	8	.90
A-5-125	Exhaust and Inlet Port Plug Gasket.....	250	8	.02
A-5-138	Exhaust and Inlet Port Plug—Plug.....	253	4	.05
X-9-100	Priming Cock.....	254	4	.35
A-5-137	Inlet Manifold.....	255	1	5.00
A-5-117	Inlet Manifold Gasket.....	256	2	.15
A-5-133	Inlet Manifold Carburetor Gasket.....		1	.25
A-5-136	Exhaust Manifold.....	257	1	7.00
A-5-118	Exhaust Manifold Gasket.....	258	3	.05
A-5-119	Exhaust Pipe Gasket.....		1	.15
VALVE				
A-5-101	Valve Stem Guide.....	259	8	.55
A-5-103	Valve.....	260	8	.85
A-5-102	Valve Spring Seat.....	261	8	.10
A-5-108	Valve Spring.....	262	8	.10
A-5-107	Valve Spring Retainer.....	263	8	.10
A-5-156	Valve Tappet Assembly (Includes Parts A-5-100 to 62, inclusive).....		8	1.55
A-5-100	Valve Tappet Guide.....	264	8	.55
A-5-104	Valve Tappet.....	265	8	1.00*
A-5-122	Valve Tappet Adjusting Screw.....	266	8	.10
A-5-145	Valve Tappet Adjusting Screw Plug.....	267	8	.03
62	Valve Tappet Adjusting Screw Nut.....	268	8	.02
PISTON				
A-3-104	Piston Assembly (Includes Parts A-3-100 to A-3-103, inclusive).....		4	7.50
A-3-100	Piston (Standard and oversize).....	269	4	5.00
A-3-102	Piston Ring (Standard and oversize).....	270	16	.30
A-3-101	Piston Pin (Standard and oversize).....	271	4	1.00*
A-3-103	Piston Pin Set Screw.....	272	4	.05
CONNECTING ROD				
A-4-110	Connecting Rod Assembly (Includes Parts A-4-100 to A-4-109, inclusive).....		4	8.50
A-4-100	Connecting Rod.....	273	4	5.75
A-4-101	Connecting Rod Bolt.....	274	8	.20
X-30-154	Connecting Rod Bolt Nut.....	275	8	.05
A-4-102	Connecting Rod Bearing—Upper.....	276	4	.55
A-4-103	Connecting Rod Bearing—Lower.....	277	4	.95
A-4-106	Connecting Rod Shim No. 20-G.....		8	.04
A-4-107	Connecting Rod Shim No. 14-G.....	278	8	.04
A-4-108	Connecting Rod Shim No. 26-G.....		8	.04
A-4-109	Connecting Rod Shim No. 38-G.....		24	.04
WATER PUMP				
22-H-28	Water Pump and Shaft Assembly (Includes Parts 22-H-23 to H-3-109, H-3-117 to H-3-111, X-9-101, X-15-100, X-16-145, X-19-120, X-26-114 and X-30-100, inclusive).....		1	14.00
22-H-27	Water Pump and Shaft Assembly (Includes Parts 22-H-23 to H-3-104, H-3-102 to H-3-111, X-9-101, X-15-100, X-16-145, X-19-120, X-26-114 and X-30-100, inclusive).....		1	14.00
22-H-23	Water Pump Body—Rear and Bushing.....	279	1	4.45
22-H-22	Water Pump Body—Front and Bushing.....	280	1	4.90
22-H-25	Water Pump Body Bushing Rear.....		1	.45
22-H-24	Water Pump Body Bushing Front.....		1	.45
H-3-105	Water Pump Body Bushing Packing Nut—Rear.....	281	1	.75
H-3-106	Water Pump Body Bushing Packing Nut—Front.....	282	1	.75
H-3-109	Water Pump Body Gasket.....	283	1	.03
H-3-104	Water Pump Shaft 13 ¹ / ₈ " Long (Use with H-3-107).....		1	1.05
H-3-117	Water Pump Shaft 11 ¹ / ₈ " Short (Use with H-3-116).....	284	1	.90
H-3-102	Water Pump Paddle.....		1	1.00
H-3-113	Water Pump Paddle Thrust Washer.....		2	.20
815	Water Pump Drain Cock 1/8".....		1	.30
H-3-111	Water Pump Grease Cup Extension—Front.....		1	.20
H-3-112	Water Pump Grease Cup Extension—Rear.....		1	.30
X-19-120	Water Pump Grease Cup.....	285	2	.15
H-3-107	Water Pump Drive Gear Shaft 4 ³ / ₈ "—Short (Use with H-3-104).....	286	1	1.10
H-3-116	Water Pump Drive Gear Shaft 6"—Long (Use with H-3-117).....		1	1.50
H-3-108	Water Pump Drive Gear Shaft Coupling.....	287	1	.85
H-4-100	Water Pump Outlet Elbow (Cylinder End 1/8" Hole).....	288	1	1.75
22-H-6	Water Pump Outlet Elbow (Cylinder 1 ¹ / ₈ " Hole).....		1	1.75
H-4-101	Water Pump Outlet Elbow Gasket.....		1	.05
H-4-102	Water Pump Inlet Elbow 1 1/4" (Pump to Radiator Hose).....		1	1.75
22-H-8	Water Pump Inlet Elbow 1 1/2" (Pump to Radiator Hose).....		1	1.75
H-4-103	Water Pump Inlet Elbow Gasket.....		1	.05

★ Revised and corrected July 5, 1916.

FAN

NAME OF PARTS		Illustra- tion No.	No. Req.	Price Each
Part No.				
H-2-124	Fan Assembly (Includes Parts H-2-111 to H-2-106 and X-19-113, X-14-102, X-30-105, X-22-105 and X-30-103, inclusive).....		1	\$7.00
H-2-111	Fan Hub.....		1	2.25
H-2-125	Fan Blade.....		6	.15
H-2-116	Fan Spindle.....		1	.60
H-2-117	Fan Bearing Cone.....		2	.30
H-2-118	Fan Bearing Cup.....		2	.30
103	Fan Bearing Ball.....		15	.02
H-2-120	Fan Bearing Ball Retainer.....		2	.05
H-2-121	Fan Bearing Cone Washer.....		2	.03
H-2-122	Fan Bearing Felt.....		2	.02
H-2-119	Fan Bearing Nut Washer.....		1	.06
H-2-106	Fan Support Arm.....		1	1.50
H-2-115	Fan Belt.....		1	.75
X-19-113	Fan Bearing Oiler.....		1	.15

STARTING CRANK

L-1-106	Starting Crank Assembly (Includes Parts L-1-105 to 101, inclusive).....	1	\$4.50
L-1-105	Starting Crank.....	1	1.50
L-1-102	Starting Crank Pin.....	1	.10
L-1-107	Starting Crank Handle.....	1	.50
L-1-108	Starting Crank Handle Screw.....	1	.10
D-2-118	Starting Crank Bracket.....	1	1.15
L-1-100	Starting Crank Ball Stop Spring.....	1	.05
L-1-101	Starting Crank Ball Stop Plug.....	1	.10
101	Starting Crank Ball $\frac{3}{4}$ ".....	1	.03

CLUTCH

Used on all models except where noted.

C-1-123	Clutch Assembly (Includes Parts C-1-113 to C-1-104, C-1-125 to C-1-127, C-1-115 to X-7-102, inclusive).....	1	\$30.00
C-1-128	Clutch Cone and Hub Assembly (Used on R. only) (Includes Parts C-1-113 to C-1-114, inclusive).....	1	15.00
C-1-113	Clutch Hub.....	300	1 3.00
C-1-112	Clutch Cone.....	301	1 3.15
C-1-121	Clutch Leather.....	302	1 2.85
C-1-122	Clutch Leather Spring and Stud.....	303	8 .15
C-1-117	Clutch Hub Stud.....	304	4 .10
C-1-114	Clutch Hub Bearing.....	305	1 .75
C-1-116	Clutch Spring.....	306	1 .35
C-1-104	Clutch Spring Seat.....	307	1 .10
C-1-102	Clutch Spring Thrust Bearing Assembly (Includes Parts C-1-125 to C-1-127, inclusive).....	308	1 1.50
C-1-125	Clutch Spring Thrust Bearing Plain Washer.....	1	.25
C-1-126	Clutch Spring Thrust Bearing Grooved Washer.....	1	.30
C-1-127	Clutch Spring Thrust Bearing Ball Retainer and Balls.....	1	.90
B-6-127	Clutch Universal Joint Assembly (Includes Parts C-1-115 to X-7-102, inclusive).....	1	12.50
C-1-115	Clutch Universal Joint Yoke (Clutch End).....	309	1 4.50
B-6-106	Universal Joint Shaft (Clutch to Transmission).....	310	1 .65
B-6-107	Universal Joint Shaft Pin (Clutch to Transmission).....	311	2 .50
B-6-100	Universal Joint Shaft Pin Block (Clutch to Transmission).....	312	4 .50
B-6-101	Clutch Universal Joint Yoke (Transmission End).....	313	1 3.50
B-6-102	Clutch Universal Joint Yoke Block Retainer.....	314	1 .10
B-6-103	Clutch Universal Joint Yoke Sleeve.....	315	1 .60
X-24-151	Clutch Universal Joint Yoke Sleeve Set Screw.....	1	.03
B-6-108	Clutch Universal Joint Boot.....	316	1 .45
B-6-109	Clutch Universal Joint Boot Retaining Collar—Small.....	317	1 .20
B-6-125	Clutch Universal Joint Boot Retaining Collar—Large.....	318	1 .25
X-7-102	Clutch Universal Joint Yoke (Clutch End) Pipe Plug.....	319	1 .05

TRANSMISSION

Used on all models except where noted.

RB-2-113	Transmission Assembly.....	1	Prices on Application
B-2-108	Transmission Case—Upper.....	330	1 \$55.00
B-2-109	Transmission Case—Lower.....	331	
B-2-110	Transmission Case Cover.....	332	1 2.50
B-2-100	Transmission Case Oil Hole Plug.....	333	2 .25
341	Transmission Case Oil Hole Plug Gasket.....	334	2 .01
B-4-106	Transmission Hand Brake Shaft Bearing—Right.....	335	1 .45
B-4-107	Transmission Hand Brake Shaft Bearing—Left.....	336	1 .50
B-5-115	Transmission Hand Brake Shaft Bearing Washer.....	337	1 .10
B-4-103	Transmission Main Shaft Bearing—Front.....	338	1 .75
RB-5-136	Transmission Repair Set Assembly.....	1	Prices on Application
RB-4-104	Transmission Main Shaft Bearing—Rear.....	339	1 1.50

Revised and corrected Feb. 21, 1918.

TRANSMISSION—Continued

Used on all models except where noted.

Part No.	NAME OF PARTS	Illustration No.	No. Req.	Price Each
B-4-101	Transmission Countershaft Bearing.....	340	2	\$0.90
B-3-103	Transmission Mainshaft.....	341	1	7.50
B-3-107	Transmission Mainshaft Pin.....	342	1	.05
B-3-108	Transmission Mainshaft Washer.....	343	1	.15
RB-1-108	Transmission Mainshaft Drive Gear 16 teeth.....	344	1	8.00
B-4-102	Transmission Mainshaft Drive Gear Bushing.....	345	1	1.25
RB-1-105	Transmission Mainshaft High and Intermediate Gear 23 teeth.....	346	1	8.50
B-1-106	Transmission Mainshaft Low and Reverse Gear 29 teeth.....	347	1	5.60
B-3-102	Transmission Mainshaft Thrust Washer.....		1	.30
B-3-105	Transmission Mainshaft Nut Washer.....	348	1	.05
X-29-207	Transmission Mainshaft Nut.....	349	1	.07
RB-3-106	Transmission Countershaft Assembly (Used with Repair Set) (Includes Parts B-3-104 to B-1-103, inclusive).....		1	22.00
B-3-104	Transmission Countershaft.....	350	1	3.75
RB-1-104	Transmission Countershaft Drive Gear 30 teeth.....	351	1	6.50
RB-1-101	Transmission Countershaft Intermediate Gear 23 teeth.....	352	1	5.50
B-1-102	Transmission Countershaft Low Gear 17 teeth.....	353	1	3.35
B-1-103	Transmission Countershaft Reverse Gear 14 teeth.....	354	1	3.00
B-1-100	Transmission Reverse Idler Gear 16 teeth.....	355	1	3.00
B-4-100	Transmission Reverse Idler Gear Bearing.....	356	1	.25
B-3-100	Transmission Reverse Idler Gear Shaft.....	357	1	.90
B-3-101	Transmission Reverse Idler Gear Shaft Washer.....	358	1	.10
RB-5-129	Transmission High and Intermediate Gear Shifter Yoke.....	359	1	1.85
RB-5-113	Transmission High and Intermediate Gear Shifter Bar.....	360	1	.90
B-5-111	Transmission Low and Reverse Gear Shifter Yoke.....	361	1	1.80
B-5-114	Transmission Low and Reverse Gear Shifter Bar.....	362	1	.45
X-7-102	Transmission Gear Shifter Yoke Plug $\frac{3}{8}$ ".....	363	1	.05
B-5-101	Transmission Gear Shifter Yoke Lock Spring.....	364	1	.05
58	Transmission Gear Shifter Yoke Lock Ball.....	365	1	.07
RB-5-112	Transmission Gear Shifter Lever Gate.....	366	1	3.00
101	Transmission Gear Shifter Lever Gate Lock Ball.....	367	1	.03
B-6-128	Transmission Universal Joint Thrust Washer.....	368	1	.30
B-2-105	Transmission Case Foot Shim—Thin.....		2	.02
B-2-106	Transmission Case Foot Shim—Medium.....		2	.02
B-2-107	Transmission Case Foot Shim—Thick.....		2	.02

PARTS USED IN TRANSMISSION WHEN NOT EQUIPPED WITH THE REPAIR OR R. B. SET

B-4-104	Transmission Mainshaft Bearing—Rear.....	369	1	\$0.90
B-3-103	Transmission Mainshaft.....		1	7.50
B-1-108	Transmission Mainshaft Drive Gear.....	370	1	7.50
B-1 105	Transmission Mainshaft High and Intermediate Gear.....	371	1	4.75
B-3-106	Transmission Countershaft Assembly (Includes Parts B-3-104 to B-1-103, inclusive).....		1	20.00
B-3-104	Transmission Countershaft.....		1	3.75
B-1-104	Transmission Countershaft Drive Gear.....	372	1	5.50
B-1-101	Transmission Countershaft Intermediate Gear.....	373	1	4.50
B-1-102	Transmission Countershaft Low Gear.....		1	3.35
B-1-103	Transmission Countershaft Reverse Gear.....		1	3.00
B-5-127	Transmission Gear Shifter Assembly (Includes Parts RB-5-129 to X-10-151, inclusive).....		1	7.75
RB-5-129	Transmission High and Intermediate Gear Shifter Yoke.....	374	1	1.85
B-5-113	Transmission High and Intermediate Gear Shifter Bar.....	375	1	.90
B-5-111	Transmission Low and Reverse Gear Shifter Yoke.....		1	1.80
B-5-114	Transmission Low and Reverse Gear Shifter Bar.....		1	.45
X-7-102	Transmission Gear Shifter Yoke Plug $\frac{3}{8}$ ".....		1	.05
B-5-101	Transmission Gear Shifter Yoke Lock Spring.....		1	.05
58	Transmission Gear Shifter Yoke Lock Ball.....		1	.07
B-5-112	Transmission Gear Shifter Lever Gate.....		1	3.00
101	Transmission Gear Shifter Lever Gate Lock Ball.....		1	.03
X-16-150	Transmission Gear Shifter Taper Pin.....	376	2	.03
X-16-151	Transmission Gear Shifter Taper Pin.....	377	2	.03

RADIATOR

Used on all models except where noted.

H-1-100	Radiator Assembly (with $1\frac{1}{4}$ " Water Connection) (Includes Parts Riveted and Soldered to Radiator, 22-H-21, H-1-109 and G-4-106, inclusive).....	1	Prices or Applicatic
22-H-10	Radiator Assembly (with $1\frac{1}{2}$ " Water Connection) (Includes Parts Riveted and Soldered to Radiator, 22-H-21, H-1-109 and G-4-106, inclusive).....	1	Prices on Applicatic
22-H-21	Radiator Filler Cap.....	1	\$.75
H-1-109	Radiator Filler Screen.....	1	.45
X-9-106	Radiator Drain Cock.....	1	.30
G-4-106	Radiator Leather Lace.....	1	.10
H-1-101	Radiator Brace Rod.....	1	.55
X-6-103	Radiator Brace Rod Clevis Pin.....	1	.03
H-4-107	Radiator Hose $1\frac{1}{4}$ " (Radiator to Cylinder).....	1	.45
22-H-18	Radiator Hose $1\frac{1}{2}$ " (Radiator to Cylinder).....	1	.80
H-4-105	Radiator Hose $1\frac{1}{4}$ " (Radiator to Pump).....	1	.60
22-H-17	Radiator Hose $1\frac{1}{2}$ " (Radiator to Pump).....	1	.60
H-4-106	Radiator Hose Reinforcement $1\frac{1}{2}$ ".....	1	.05
H-1-119	Radiator Stud.....	2	.10

BONNET

Part No.	NAME OF PARTS	Illustra- No.		Price Each
		tion No.	Req.	
G-4-103	Bonnet Assembly	1		\$12.50
G-4-109	Bonnet Handle	2		.20
G-4-113	Bonnet Lock Assembly (Includes Parts G-4-105 and B-4-116, inclusive).....	4		.20
G-4-105	Bonnet Lock	4		.15
E-4-116	Bonnet Lock Spring	4		.05
G-4-116	Bonnet Clamp Assembly (Includes Parts D-2-148 to G-4-112, inclusive).....	4		.65
D-2-148	Bonnet Clamp Stud Bracket	4		.20
G-4-108	Bonnet Clamp Stud	4		.10
G-4-111	Bonnet Clamp Stud Plate	4		
G-4-112	Bonnet Clamp Thumb Nut	4		.10
22-G-7	Bonnet Ledge Assembly	1		1.75
G-4-106	Bonnet Lace	1		.10

CARBURETOR

Used on all models except where noted.

NOTE.—The Hudson Motor Car Company does not carry carburetors or their parts in stock, so if renewal or repairs are necessary, take the matter up direct with Carburetor Manufacturers at their headquarters or Stations.
A list of Stromberg Motor Devices Co. stations will be found on pages 20-21 of this book.

A list of Mayer Carburetor Mfg. Company stations will be found on page 22 of this book.

A-5-150	Stromberg Carburetor Hot Water Jacket	1		2.50
J-2-103	Stromberg Carburetor Hot Water Line (Carburetor to Radiator)	1		.45
J-2-104	Stromberg Carburetor Hot Water Line (Carburetor to Cylinder)	1		.45
J-2-105	Stromberg Carburetor Flange	1		.50
X-8-100	Stromberg Carburetor Hot Water Line Nipple	1		.15
J-3-111	Carburetor Throttle Spring	1		.10
J-3-112	Carburetor Throttle Spring Anchor Screw	1		.05

MAGNETO

NOTE.—The Hudson Motor Car Company does not carry magnetos or their repair parts in stock, so if renewal or repairs are necessary, take the matter up direct with the magneto manufacturers at their headquarters or stations.

A list of Bosch Magneto Company's stations will be found on pages 17-20 of this book.

I-3-112	Magneto Strap Assembly (Includes Parts I-3-105 to I-3-111, inclusive)	1		
I-3-105	Magneto Strap—Long	1		
I-3-104	Magneto Strap—Short	1		.15
I-3-106	Magneto Strap Swivel End	1		.20
I-3-107	Magneto Strap Swivel Block	1		.20
I-3-109	Magneto Strap Short Tee End	1		.10
I-3-110	Magneto Strap Thumb Nut Tee End	1		.10
I-3-111	Magneto Strap Thumb Nut	1		.15
I-3-113	Magneto Dowel	1		.05
I-3-114	†* Magneto Coupling Assembly (Includes Parts I-3-115 to I-3-117, X-32-112, X-30-151, X-21-102 and X-24-151, inclusive)	1		3.25
I-3-115	†* Magneto Coupling—Rear	1		2.00
I-3-116	†* Magneto Coupling—Center	1		.25
I-3-117	†* Magneto Coupling—Front	1		.75

SPARK COIL

NOTE.—The Hudson Motor Car Company does not carry the spark coils or repair parts in stock, so if renewals or repair parts are necessary, take the matter up direct with Spark Coil manufacturer, Heinze Electric Co., Lowell, Mass., J. & B. Mfg. Co., Springfield, Mass.

IGNITION PARTS

Used on all models except where noted.

I-5-105	Secondary Cable Clip	4		.05
I-5-106	Primary Cable Clip	7		.02
I-5-103	Spark Plug Cable Support—Front	1		
I-5-104	Spark Plug Cable Support—Rear	2		
I-5-125	Spark Plug Cable Support—Front	1		.45
I-5-126	Spark Plug Cable Support—Rear	1		.75
I-5-127	Spark Plug Cable Support Block—Center	4		.10
I-5-128	Spark Plug Cable Support Block—Outer	4		.10
I-5-129	Spark Plug Cable Support Stud—Rear	2		.15
I-5-130	Spark Plug Cable Support Stud—Front	1		.15

GASOLINE TANK

Used on R. only.

Part No.	NAME OF PARTS	Illustration No.	No. Req.	Price Each
J-1-100	Gasoline Tank (Includes all Parts Soldered and Riveted to Tank)		1	\$8.00
J-1-113	Gasoline Tank Filler Cap		1	.70
J-1-114	Gasoline Tank Filler Strainer		1	.60
J-1-101	Gasoline Tank Strap		2	
J-1-117	Gasoline Tank Strap End		4	
J-4-101	Gasoline Tank Nipple (Gasoline Tank to Sediment Cup)		1	.10
J-4-100	Gasoline Tank Sediment Cup		1	.55
X-9-106	Gasoline Tank Sediment Cup Drain Cock		1	.30
J-4-113	Gasoline Tank Supply Line (Sediment Cup to Shut Off Cock)		1	.70
X-8-101	Gasoline Tank Supply Line Couplings		4	.20
X-8-102	Gasoline Tank Supply Line Couplings Nipple		2	.20
X-9-108	Gasoline Tank Supply Line Shut Off Cock		1	.25
J-4-109	Gasoline Tank Supply Line (Shut Off Cock to Carburetor)		1	.75

GASOLINE TANK (ROUND)

J-1-103	Gasoline Tank (Includes Parts Soldered and Riveted to Tank)		1	\$22.50
J-1-121	Gasoline Tank Filler Cap		1	1.05
J-1-122	Gasoline Tank Filler Strainer		1	.75
J-1-110	Gasoline Tank Strap		2	
J-1-104	Gasoline Tank Strap End		4	.45
J-1-107	Gasoline Tank Support		2	1.35
J-4-108	Gasoline Tank Nipple (Gasoline Tank to Sediment Cup)		1	.75
J-4-100	Gasoline Tank Sediment Cup		1	.55
X-9-106	Gasoline Tank Sediment Cup Drain Cock		1	.35
J-4-114	Gasoline Tank Supply Line (Sediment Cup to Shut Off Cock)		1	.90
X-8-101	Gasoline Tank Supply Line Coupling		4	.20
X-8-102	Gasoline Tank Supply Line Coupling Nipple		2	.20
X-9-108	Gasoline Tank Supply Line Shut Off Cock		1	.25
J-4-109	Gasoline Tank Supply Line (Shut Off Cock to Carburetor)		1	.75

GASOLINE TANK

Used on T. C. only

J-1-116	Gasoline Tank (Includes all Parts Soldered and Riveted to Tank)		1	\$8.00
J-1-113	Gasoline Tank Filler Cap		1	.70
J-1-114	Gasoline Tank Filler Strainer		1	.60
J-1-119	Gasoline Tank Strap Assembly (Includes Parts J-1-118 and J-1-117, inclusive)		2	
J-1-118	Gasoline Tank Strap		2	
J-1-117	Gasoline Tank Strap End		4	
J-4-102	Gasoline Tank Nipple (Gasoline Tank to Sediment Cup)		1	.20
J-4-100	Gasoline Tank Sediment Cup		1	.50
X-9-106	Gasoline Tank Sediment Cup Drain Cock		1	.30
J-4-110	Gasoline Tank Supply Line (Sediment Cup to Shut Off Cock)		1	.50
X-8-101	Gasoline Tank Supply Line Coupling		4	.20
X-8-102	Gasoline Tank Supply Line Coupling Nipple		2	.20
X-9-108	Gasoline Tank Supply Line Shut Off Cock		1	.25
J-4-109	Gasoline Tank Supply Line (Shut Off Cock to Carburetor)		1	.75

MUFFLER AND EXHAUST PIPE

Used on all models except where noted.

N-1-100	Muffler Assembly		1	\$4.00
N-1-101	Muffler Head—Front		1	
N-1-102	Muffler Head—Rear		1	
N-1-104	Muffler Pipe Packing Nut		1	
A-5-130	Exhaust Pipe		1	1.50
A-5-120	Exhaust Pipe Flange		1	1.25
A-5-131	Exhaust Pipe Ferrule		1	.05
A-5-132	Exhaust Pipe Camp		1	.10

FENDERS

Used on Roadster only

E-4-107	Front Fender—Right (Standard Tread)		1	\$10.50
E-4-108	Front Fender—Left (Standard Tread)		1	10.50
E-4-119	Front Fender—Right (60-inch Tread)		1	11.00
E-4-120	Front Fender—Left (60-inch Tread)		1	11.00
E-4-183	Rear Fender—Right (Standard Tread)		1	12.00
E-4-182	Rear Fender—Left (Standard Tread)		1	12.00
E-4-121	Rear Fender—Right (60-inch Tread)		1	12.50
E-4-122	Rear Fender—Left (60-inch Tread)		1	12.50

Revised and corrected Feb. 21, 1916.

FENDERS—Continued

Used on R. only.

Part No.	NAME OF PARTS	Illustration No.	No. Req.	Price Each
E-4-184	Front Fender—Right (Standard Tread).....		1	\$10.50
E-4-185	Front Fender—Left (Standard Tread).....		1	10.50
E-4-233	Front Fender—Right (60-inch Tread).....		1	11.00
E-4-234	Front Fender—Left (60-inch Tread).....		1	11.00
E-4-183	Rear Fender—Right (Standard Tread).....		1	12.00
E-4-182	Rear Fender—Left (Standard Tread).....		1	12.00
E-4-232	Rear Fender—Right (60-inch Tread).....		1	12.50
E-4-231	Rear Fender—Left (60-inch Tread).....		1	12.50

Used on Foredoor only.

E-4-255	Rear Fender—Right (Standard Tread).....		1	9.50
E-4-256	Rear Fender—Left (Standard Tread).....		1	9.50
E-4-259	Rear Fender—Right (60-inch Tread).....		1	12.50
E-4-260	Rear Fender—Left (60-inch Tread).....		1	12.50

Used on T.C. and F.R. only.

E-4-153	Front Fender—Right (Standard Tread).....		1	11.50
E-4-152	Front Fender—Left (Standard Tread).....		1	11.50
E-4-201	Front Fender—Right (60-inch Tread).....		1	12.50
E-4-202	Front Fender—Left (60-inch Tread).....		1	12.50

Used on T.C. only.

E-4-154	Rear Fender—Right (Standard Tread).....		1	10.00
E-4-155	Rear Fender—Left (Standard Tread).....		1	10.00
E-4-203	Rear Fender—Right (60-inch Tread).....		1	10.50
E-4-204	Rear Fender—Left (60-inch Tread).....		1	10.50

SPLASH GUARD

Used on R. only.

E-4-189	Splash Guard—Right (Standard Tread).....		1	\$1.50
E-4-190	Splash Guard—Left (Standard Tread).....		1	1.50
E-4-235	Splash Guard—Right (60-inch Tread).....		1	1.55
E-4-236	Splash Guard—Left (60-inch Tread).....		1	1.55
E-4-212	Splash Guard Joint Strip—Right (Standard Tread).....		1	.30
E-4-211	Splash Guard Joint Strip—Left (Standard Tread).....		1	.30
E-4-230	Splash Guard Joint Strip—Right (60-inch Tread).....		1	.30
E-4-229	Splash Guard Joint Strip—Left (60-inch Tread).....		1	.30

Used on T.C. and F.R. only.

E-4-191	Splash Guard—Right (Standard Tread).....		1	1.60
E-4-192	Splash Guard—Left (Standard Tread).....		1	1.60
E-4-199	Splash Guard—Right (60-inch Tread).....		1	1.70
E-4-200	Splash Guard—Left (60-inch Tread).....		1	1.70

TONNEAU STEP HOUSING

Used on T.C. and F.R. only.

E-4-193	Tonneau Step Housing—Right (Standard Tread).....		1	\$1.20
E-4-194	Tonneau Step Housing—Left (Standard Tread).....		1	1.20
E-4-196	Tonneau Step Housing—Right (60-inch Tread).....		1	1.50
E-4-197	Tonneau Step Housing—Left (60-inch Tread).....		1	1.50
E-4-133	Tonneau Step.....		2	2.50

RUNNING BOARD

Used on all models except where noted.

E-4-130	Running Board—Right (Used on T.C. only).....		1	\$10.00
E-4-162	Running Board—Left (Used on T.C. only).....		1	9.50
E-4-176	Running Board (Used on R. only).....		2	2.50
E-4-163	Running Board Bolt Washer.....		10	.03
D-2-169	Running Board Frame Bracket (Standard Tread).....		2	.90
D-2-174	Running Board Frame Bracket (60-inch Tread).....		2	1.00
D-2-111	Running Board Bracket (Standard Tread) (Used on R. only).....		2	.90
D-2-124	Running Board Bracket (60-inch Tread) (Used on R. only).....		2	1.00

SOD PAN AND DUST GUARD

Used on all models except where noted.

Part No.	NAME OF PARTS	Illustration No.	No. Req.	Price Each
E-4-117	Sod Pan.....	1		\$7.50
E-4-115	Sod Pan Lock.....	6		.20
E-4-116	Sod Pan Lock Spring.....	6		.05
24-D-31	Rear Dust Guard.....	1		

DASH

Used on all models except where noted.

G-3-104	Dash Assembly (Used on R. only).....	1	{	Prices on Application
G-3-114	Dash Assembly (Used on T.C. and F.R. only).....	1		
G-3-106	Dash Board Moulding.....	1		

BODY

Used on R. only.

G-1-115	Seat Cushion—Front.....	2	{	Prices on Application
G-1-116	Seat Cushion Rumble.....	1		

Used on T.C. only.

G-1-122	Seat Cushion—Front.....	2		
G-1-123	Seat Cushion—Rear.....	1		

LAMP AND LAMP BRACKET

Used on all models except where noted.

G-2-103	Head Lamp.....	2	{	Prices on Application
G-2-108	Dash Lamp.....	2		
G-2-107	Tail Lamp.....	1		
D-2-117	Head Lamp Bracket.....	2		\$1.00
G-2-115	Head Lamp Bracket Tie Rod.....	1		.20
G-3-108	Dash Lamp Bracket—Right.....	1		1.00
G-3-102	Dash Lamp Bracket—Left.....	1		1.00
D-2-121	Tail Lamp Bracket (Used on R. only).....	1		.50
G-2-192	Tail Lamp Bracket (Used on T.C. only).....	1		.50

TOOLS

E-2-108	Wheel Hub Cup Wrench.....	1		\$.60
---------	---------------------------	---	--	--------

BOSCH MAGNETO COMPANY**Main Office: New York****Factory: Springfield, Mass.****Distributor No. 1****Motor Parts Co., 818 North Broad St., Philadelphia, Pa.**
SUPPLY STATIONS

Central Motor Car Co., 522-528 Chestnut St., Reading, Pa.
 Cuskaden Auto Supply Co., 2006 Atlantic Ave., Atlantic City, N. J.
 Dorbeck, R. V., Brighton Ave., West End, Long Branch, N. J.
 Haddock-Nixon Taxicab Co., Delaware Ave. & Tatnall St., Wilmington, Del.
 Motor Shop, Inc., The, East State St., Tranton, N. J.
 New Jersey Automobile & Supply Co., 38 N. Delaware Ave., Camden, N. J.
 Reilly Bros. & Raub, 44-46 Queen St., Lancaster, Pa.
 Susquehanna Motor Car Co., 37 West Market St., Wilkes Barre, Pa.
 Front-Market Motor Supply, Harrisburg, Pa.

Distributor No. 2**Motor Parts Co., 185 Columbus Ave., Boston, Mass.**
SUPPLY STATIONS

American Ball Co., 115 Clifford St., Providence, R. I.
 Ashwell, Robt. R., 341 Trumbull St., Hartford, Conn.
 Augusta Garage, Augusta, Maine.
 Bangor Motor Co., Bangor, Maine.
 Brass City Auto Co., 27 Benedict St., Waterbury, Conn.
 Darling Automobile Co., 29-31 Turner St., Auburn, Maine.
 Ellsworth Foundry & Machine Works, Bar Harbor, Maine.
 Ellsworth Foundry & Machine Works, Ellsworth, Maine.
 Franklin Square Garage, Dover, N. H.
 Gloucester Garage, 1-3-5 Rogers St., Gloucester, Mass.
 Ingalls Garage Co., 91 State St., Newburyport, Mass.
 McCrillis & Son, J. B., Bridge and Malvern Sts., Manchester, N. H.
 Maine Motor Car Co., Free & South Sts., Portland, Maine.
 Motor Parts Co., 143 Chestnut St., Springfield, Mass.
 Newport Engineering Works, 359 Thames St., Newport, R. I.
 Newton Company, J. E., Bedford & Troy Sts., Fall River, Mass.
 Pollard Auto Co., 232 Main St., Nashua, N. H.
 Portsmouth Motor Mart, 13 Vaughan St., Portsmouth, N. H.
 St. Albans Foundry Garage, Lake St., St. Albans, Vt.
 Wards Vulcanizing Works, 27 So. Main St., Concord, N. H.
 Wuestefeld Company, Geo. E., Temple & Commerce Sts., New Haven, Conn.
 York County Garage, Sanford, Maine.
 Plank & Morgan, 830 Main St., Worcester, Mass.
 Pollard Auto Co., 232 Main St., Nashua, N. H.
 J. & B. Mfg. Co., Pittsfield, Mass.
 William Law Co., 100 Dartmouth St., New Bedford, Mass.
 C. E. Whitten, Lynn, Mass.

Distributor No. 4**R. W. Whipple, 211-225 Washington Street, Binghamton, N. Y.****Distributor No. 5****Distributor No. 6****Motor Parts Co., 1064 Main St., Buffalo, N. Y.**
SUPPLY STATIONS

LeJeal Cycle & Mobile Works, 1721-23 Sassafras St., Erie, Pa.
 Utica Cycle Co., 115 Columbia St., Utica, N. Y.

Distributor No. 7**Distributor No. 8****Carl Spoerer's Sons Co., 501 So. Carey St., Baltimore, Md.**
SUPPLY STATIONS

Myers Co., The H. B., Annapolis, Md.
 Queen City Garage, Cumberland, Md.
 Miller-Dudley Co., 1625 14th St. N. W., Washington, D. C.

Distributor No. 9**Doubleday-Hill Electric Co., 719 Liberty Ave., Pittsburg, Pa.****SUPPLY STATIONS**

Shaw Motor Co., 41 So. Gallatin Ave., Uniontown, Pa.
 Lavender Auto Supply Co., 930 Market St., Wheeling, Pa.
 The Johnstown Automobile Co., 101 Main St., Johnstown, Pa.
 Eleventh Avenue Garage, Altoona, Pa.
 Orcutt & Buchanan, Third St., Clearfield, Pa.

Distributor No. 10**Lemke Electric Co., 280 Lake St., Milwaukee, Wis.****Distributor No. 11****Canadian Fairbanks-Morse Co., St. John, N. B.****Distributor No. 12****Canadian Fairbanks-Morse Co., Ottawa, Ont.****Distributor No. 13****Distributor No. 14****Canadian Fairbanks-Morse Co., Winnipeg, Man.****Distributor No. 19****Dallas A. Shafer & Company, 808 West Broad Street, Richmond, Va.****SUPPLY STATIONS**

Beverly Garage, Staunton, Va.
 Dan Valley Motor Co., 321 Craghead St., Danville, Va.
 Gayle Supply Co., J. P., 2608 Huntington Ave., Newport News, Va.
 Montague Garage, P. N., Main & Belw's Creek Sta., Winston-Salem, N. C.
 Virginia Motor Car Co., Lombard & 2nd Sts., Petersburg, Va.
 Virginia Motor & Machine Corp., 411 So. Jefferson, Roanoke, Va.
 Woodside Motor Co., 121½ Church St., Charlotte, N. C.
 Hudson Morgan Electric Co., 624 Main St., Lynchburg, Va.
 Reliance Electric Co., 131 West City Hall Ave., Norfolk, Va.

Distributor No. 20**Oskamp Auto Supply Co., Race & 7th Sts., Cincinnati, O.****SUPPLY STATIONS**

Cowan & Company, Andrew, 421 W. Main St., Louisville, Ky.
 Shroyer & Company, G. W., 102-6 N. Main St., Dayton, O.
 C. A. Gossard Auto Co., 122-24 S. Fayette St., Washington C. H., O.

Distributor No. 21**Fry & McGill Motor Supply Co., 1532 Broadway, Denver, Colo.****SUPPLY STATIONS**

Ohnemus & Son, R., Carlsbad, New Mexico.
 Plains Auto Co., 1605 Central Ave., Cheyenne, Wyo.
 Trinidad Novelty Works, Trinidad, Colo.
 Marksheffel Motor Co., Colorado Springs, Colo.
 J. F. McCoy, Glenwood Springs, Colo.
 Casper Machine Shop & Garage, Casper, Wyo.
 D. & D. Auto Co., Sheridan, Wyo.

BOSCH MAGNETO COMPANY**Main Office: New York****Distributor No. 22****Kansas City Auto Supply Co., 1504 Grand Ave., Kansas City, Mo.****SUPPLY STATIONS**

Armstrong Auto Co., 1515 Buchanan Ave., St. Joseph, Mo.
 Auto Supply Co., 114 E. Sherman St., Hutchinson, Kansas.
 Bering Tire & Rubber Co., 917 Main St., Houston, Tex.
 Caldwell, T. M., 114 5th St., Amarillo, Texas.
 Electric Service Co., 204 Lane St., Dallas, Texas.
 Guenther, H. G., 515 Main St., San Antonio, Texas.
 Martin, Geo. Edw., 20 W. 5th St., Tulsa, Okla.
 Severin Tire & Supply Co., 600 No. Broadway, Oklahoma City.
 Western Storage Battery & Magneto Co., 508 N. Kansas St., El Paso, Texas.
 Wichita Automobile Co., 233 No. Lawrence St., Wichita, Kan.
 Christensen & Co., John, 716 Tremont St., Galveston, Texas.

Distributor No. 23**Pence Automobile Co., 800 Hennepin Ave., Minneapolis, Minn.****SUPPLY STATIONS**

Reid Motor Supply Co., St. Paul, Minn.
 Minot Auto Co., Minot, N. D.
 H. B. Tilden, Fargo, N. D.
 Central Auto & Supply Co., Mitchell, S. D.

Distributor No. 24**Phoenix Automobile Supply Co., 3974 Olive St., St. Louis, Mo.****SUPPLY STATIONS**

Cotner Auto Supply Co., Cape Girardeau, Mo.
 Lawrenceville Auto Co., Lawrenceville, Ill.
 Nichols Motor Car Co., T. C., 707 Main St., Quincy, Ill.
 Rettinghouse, A., 3rd & Oak Sts., Centralia, Ill.
 Springfield Auto Sales Co., 416 4th St., Springfield, Ill.
 Mattoon Motor Car Co., Mattoon, Ill.
 Motor Car Supply House, Decatur, Ill.
 Modern Auto & Garage Co., Belleville, Ill.
 Triple Star Garage Co., Kahoka, Mo.
 W. F. Rothe & Co., East St. Louis, Ill. (10th & State Sts.)

Distributor No. 25**W. G. Nagel Electric Co., 28-32 St. Clair St., Toledo, O.****SUPPLY STATIONS**

Shyrock Auto Co., 709 Clay St., Fort Wayne, Ind.
 Warren Garage Co., 124 E. High St., Elkhart, Ind.

Distributor No. 26**Herring Motor Co., 106-10 West 10th St., Des Moines, Ia.****SUPPLY STATIONS**

Courtney Motor Co., Cedar Rapids, Ia.
 Mason Carriage Works, Davenport, Ia.
 Mason City Auto Co., Mason City, Ia.
 Ottumwa Auto Co., Ottumwa, Ia.
 Repass Auto Co., Waterloo, Ia.
 Swaney Auto Co., Carroll, Ia.
 North West Garage, Cherokee, Ia.
 Hanson & Tyler Auto Co., 1st Ave. No. & 7th St., Ft. Dodge, Ia.

Distributor No. 27**Gus Habich, 142 Washington St. E., Indianapolis, Ind.****SUPPLY STATIONS**

J. F. Charley Auto Co., Evansville, Ind.

Factory: Springfield, Mass.**Distributor No. 28****Ozburn Auto Supply Co., Inc., 399 Peachtree St., Atlanta, Ga.****SUPPLY STATIONS**

Parmake Company, S. S., 2nd & Poplar Sts., Macon, Ga.
 The G. Norman Baughman Co., 610-20 Tampa St., Tampa, Fla.
 T. A. Bryson, 5-9 Perry St., Savannah, Ga.
 Clyde Garage, Charleston, S. C.
 Gibbes Machinery Co., Columbia, S. C.

Distributor No. 17**Canadian Fairbanks-Morse Co., Vancouver, B. C.****Distributor No. 18****Canadian Fairbanks-Morse Co., Victoria, B. C.****Distributor No. 15****Canadian Fairbanks-Morse Co., Saskatoon, Sask.****Distributor No. 16****Canadian Fairbanks-Morse Co., Calgary, Alta.****Distributor No. 29****Powell Supply Co., 2119 Farnham St., Omaha, Nebr.****SUPPLY STATIONS**

Holmes Company, L. O., 246 So. 11th St., Lincoln, Nebr.
 Kister Garage, Hastings, Nebr.
 Markel, J. H., Nebraska City, Nebr.
 Wyckoff-Cord Automobile Co., 409 Fourth St., Sioux City, Ia.
 Max Gottberg Auto Co., Columbus, Nebr.

Distributor No. 30**E. A. Fearherstone, 1018 So. Main St., Los Angeles, Cal.****SUPPLY STATIONS**

Bakersfield Garage & Auto Supply Co., 20th & G Sts., Bakersfield, Cal.
 Gavin-Williams Co., 1318 5th St., San Diego, Cal.
 Hendey, Arthur, 109 S. Granite St., Prescott, Ariz.
 Motor Supply Co., 317 No. Central Ave., Phoenix, Ariz.
 Western Machine & Foundry Co., Cota & Anacapa Sts., Santa Barbara, Cal.
 Babbit Bros., Flagstaff, Ariz.

Distributor No. 31**Balleau & Wright, Broadway & Oak Sts., Portland, Ore.****SUPPLY STATIONS**

Astoria Hardware Co., Astoria, Oregon.
 Crater Lake Motor Car Co., 16 South First St., Medford, Ore.
 Milton Garage, Milton, Oregon.
 Pendleton Auto Co., 812 Johnson St., Pendleton, Ore.
 Smith & Wade, Cor. Front & Alder Sts., Marshfield, Ore.
 Sweet-Drain Auto Co., 1030 Oak St., Eugene, Ore.

Distributor No. 32**Ballou & Wright, 817 East Pike St., Seattle, Wash.****SUPPLY STATIONS**

The Automobile Supply Co., 757 S. C. St., Tacoma, Wash.
 Bellingham Auto Supply Co., 1234 Elk St., Bellingham, Wash.
 Child, Day & Churchill, 1217 First Ave., Spokane, Wash.
 Dahlen Auto Co., 223 E. Alder St., Walla Walla, Wash.
 Poulson Auto Co., Broadway & Market Sts., Aberdeen, Wash.
 Olympia Auto Supply Co., 221 4th St., Olympia, Wash.
 Haley & Sheraton Co., Inc., Cor. Coby & Everett, Everett, Wash.
 St. John & Titus, 211 W. Main St., Centralia, Wash.

BOSCH MAGNETO COMPANY**Main Office: New York****Distributor No. 33****Kimball-Upson Company, 609-11 K Street, Sacramento, Cal.****SUPPLY STATIONS****Roberts Electrical Works, Geo. W., 325 D Street, Marysville, Cal.****Distributor No. 34****Bertram Motor Supply Co., 342 South State St., Salt Lake City, Utah.****SUPPLY STATIONS****Bertram Motor Supply Co. of Idaho, Inc., 10th & Grove, Boise, Idaho.****Bertram Motor Supply Co. of Montana, Inc., 242 So. Main St., Butte, Mont.****Blair Motor Co., 71-75 West 1st St., Logan, Utah.****Clay Auto Co., Idaho Falls, Idaho, 22-26 A St.****Elko Auto Co., Elko, Nevada.****Forest Lee, 121 First Ave. North, Great Falls, Mont.****Provo Machine & Foundry Co., 5th, West & Center Sts., Provo, Utah.****Swendeman Automobile Co., 415-17 Fuller Ave., Helena, Mont.****Trist Automobile Co., 630-50 West Center St., Pocatello, Idaho.****James Auto Co., 2612 Washington Ave., Ogden, Utah.****Frank D. Stoop, Kalispell, Montana.****Western Auto Transit Co., Rock Springs, Wyo.****Distributor No. 35****Schuman Carriage Co., Honolulu, Hawaii, Is, T. H.****Distributor No. 36****Distributor No. 37****Distributor No. 38****Pennsylvania Rubber & Supply Co., 1845 Euclid Ave., Cleveland, Ohio.****SUPPLY STATIONS****Court Motor Co., 215-17 Putnam St., Marietta, O.****Morgan & Williams Co., 17-25 W. Market St., Warren, O.****Motor Supply & Tire Co., 201 Main St., Akron, O.****Motor Supply & Tire Co., 1845 Euclid Ave., Cleveland, O.****Motor Supply & Tire Co., 128 Gay St., Columbus, O.****Rathwell's Garage, 217 7th St., Lorain, O.****Stambaugh-Thompson Co., Youngstown, O.****A. H. Wilson Motor Car Co., Canton, O.****I. P. Todd, Circleville, O.****Distributor No. 39****Ozburn Auto Supply Co., Inc., 3rd St. & Monroe Ave., Memphis, Tenn.****SUPPLY STATIONS****Clendinen & Co., B. W., Dothan, Ala.****Dorris Auto Shops, 524 Broadway, Nashville, Tenn.****Drennan Motor Car Co., Ave. C & 20th St., Birmingham, Ala.****Fairchild Auto Co., Charles & Girod Sts., New Orleans, La.****Henderson's Garage, Spring & Fannin Sts., Shreveport, La.****Hobbie Motor Car Co., 220 Montgomery St., Montgomery, Ala.****Rodgers & Co., 900 Gay St., Knoxville, Tenn.****Southern Auto & Supply Co., 730 Broad St., Chattanooga, Tenn.****Cadillac Motor Car Co., 202 Government St., Mobile, Ala.****Distributor No. 40****Lemke Electric Co., 280 Lake St., Milwaukee, Wis.****Factory: Springfield, Mass.****Distributor No.****Bosch Magneto Co., 223 West 46th St., New York City****SUPPLY STATIONS****Albany Garage Co., Howard St., Albany, N. Y.****Clifton Automobile Co., Union Hill, N. J.****Empire Automobile Co., Warren St., Glens Falls, N. Y.****John P. Esser, 58 Broadway, Flushing, L. I., N. Y.****Green & Warnick, 12 Market St., Amsterdam, N. Y.****Harnell Garage, Babylon, L. I.****Erwin M. Jennings Co., Inc., 277 Fairfield Ave., Bridgeport, Conn.****Kathan & Petric, 11 Cottage St., Gloversville, N. Y.****Laing Machine Auto Repair Co., 410 Sycamore St., Plainfield, N. J.****MacDonald Garage Co., Inc., 740 State St., Schenectady, N. Y.****Martin-Evans Co., Bedford & Putnam Ave., Brooklyn, N. Y.****Mt. Vernon Auto Works, 158 So. 12th St., Mt. Vernon, N. Y.****Raban, W. A., Broad St., Port Chester, N. Y.****Reliable Magneto Repair Co., 82 Prospect St., Paterson, N. J.****Rippowam Garage, W. Main St. & Mill River Sts., Stamford, Conn.****Ross-Ketchum Co., Saratoga Springs, N. Y.****Sammis & Downer Co., Huntington, L. I., N. Y.****Shrive, Incorporated, 64 Warburton Ave., Yonkers, N. Y.****Sloan & Clapper, Inc., 10-12 Lander St., Newburgh, N. Y.****Stillman & Hoag, Englewood, N. J.****Tiffany Diamond Garage, 96 Market St., Poughkeepsie, N. Y.****Tire Trading Co., 50 William St., Newark, N. J.****Tri-State Supply Co., 2-4 Mamaroneck Ave., White Plains, N. Y.****Troy Automobile Exchange, Troy & Cohoes, N. Y.****Tyrell Co., Inc., Geo., H., 2659 Webster Ave., Bronx, N. Y.****Wiss & Bros., Victor A., 10-12 Pine St., Morristown, N. J.****G. O. Reynolds, Inc., 316-18 Main St., New Rochelle, N. Y.****Esser, John P., 1908 Broadway, New York, N. Y.****H. G. Knotten Co., Westside Ave. & Penn. Ry. Jersey City, N. J.****Distributor No.****Bosch Magneto Co., 119 E. 24th St., Chicago, Ill.****SUPPLY STATIONS****Michigan Tire Co., 218 Michigan St., N. W., Grand Rapids, Mich.****Eric J. Gustafson, Rockford, Ill.****Graham-Seltzer Co., 120-122 Main St., Peoria, Ill.****Ford Garage, 410 W. Washington St., Bloomington, Ill.****Freeport Garage, 44-46 Exchange St., Freeport, Ill.****Galesburg Machine Works, Galesburg, Ill.****Hilliard Garage, H. J., 227 W. Main St., Ottawa, Ill.****Joliet, Motor Co., 504-12 Clinton St., Joliet, Ill.****Geo. Netzt, Dixon, Ill.****Sauermann Motor Co., 1516 Fourth Ave., Rock Island, Ill.****Washington Garage, Evanston, Ill.****Distributor No.****Bosch Magneto Co., 357 Van Hess Ave., San Francisco, Cal.****SUPPLY STATIONS****Cousins-Howland Auto Co., 110 E. 7th St., Hanford, Cal.****Latcher Garage, 214 N. 1st St., San Jose, Cal.****Jensen Bros. Auto Co., Santa Cruz, Cal.****Waterman Bros., Co. Cor. L & Tulare Sts., Fresno, Cal.****Distributor No. 41****Erlanger & Galinger, 155 Excolta, P. I., 11 Broadway, N. Y. C.****Distributor No.****Bosch Magneto Co., 1250 Woodward Ave., Detroit, Mich.****SUPPLY STATIONS****Central Auto Supply Co., 103-9 W. Pearl St., Jackson, Mich.****Union Garage, 121-125 W. Washington St., Lansing, Mich.****S. H. Higgenbottom & Sons, 513-21 Tuscola St., Saginaw, Mich.**

SPLITDORF ELECTRICAL COMPANY**972 Woodward Ave., Detroit, Mich.****SERVICE STATIONS**

ATLANTA, 10-12 East Harris Street
 BOSTON, St. Germain St., Cor. Mass. Ave.
 CHICAGO, 64-72 East 14th Street
 CINCINNATI, 811 Race Street
 DALLAS, 402 So. Ervay Street
 DAYTON, 427 East 3rd Street
 DETROIT, 972 Woodward Avenue
 KANSAS CITY, 1827 Grand Avenue
 LOS ANGELES, 1215 So. Hope Street

MINNEAPOLIS, 34 So. 8th Street
 NEWARK, 290 Halsey Street
 NEW YORK, 18-20 West 63rd Street
 PHILADELPHIA, 210-212 North 13th Street
 SAN FRANCISCO, 1028 Geary Street
 SEATTLE, 1628 Broadway
 TORONTO, 469 Yonge Street
 LONDON, 6 City Road, Finsbury Square
 BUENOS AIRES, 964 Calle Belgrano

STROMBERG MOTOR DEVICES CO.**64-68 E. 25th Street, Chicago, Ill.**

Stromberg Motor Devices Co., 33 W. Michigan St., Indianapolis, Ind.
 Stromberg Motor Devices Co., 463 Woodward Ave., Detroit, Mich.
 Stromberg Motor Devices Co., Motor Mart, 91 Church St., Boston, Mass.
 Stromberg Motor Devices Co., 64-68 E. 25th St., Chicago, Ill.
 Maxwell Motor Car Co., 1003-07 E. State St., Lawrenceville, Ill.
 Douglass & Koontz, 501 Landau St., Joliet, Ill.
 Galesburg Machine Works, 260 Seminary St., Galesburg, Ill.
 G. H. Deane & Co., DeKalb, Ill.
 Robert Holmes & Bros., 32 N. Hazel, Danville, Ill.
 Cairo Motor Co., 21st & Washington Sts., Cairo, Ill.
 A. G. Carnahan, 208-10 E. Monroe St., Bloomington, Ill.
 Modern Auto & Garage Co., 504 E. Main St., Belleville, Ill.
 C. Norman Baughman Co., Tampa, Fla.
 Bell Bros. Garage, Opp. West Park, Stamford, Conn.
 Geo. B. Wuestefeld, 32 Temple St., New Haven, Conn.
 R. D. & C. O. Britton, 115-21 Allyn St., Hartford, Conn.
 Fillow Auto Co., 31 Crosby St., Danbury, Conn.
 Columbus Garage, 1841 Main St., Bridgeport, Conn.
 Chanslor & Lyon Co., 1228 Van Ness Ave., San Francisco, Cal.
 Chanslor & Lyon Motor S. Co., 945-47 S. Main St., Los Angeles, Cal.
 Chanslor & Lyon Co., K & Merced Sts., Fresno, Cal.
 C. R. May, Claremont, Cal.
 Stromberg Motor Devices Co., 146 W. 46th St., New York, N. Y.
 Stromberg Motor Devices Co., 1514 Hennepin Ave., Minneapolis, Minn.
 Mason City Auto Co., 108 N. Washington St., Mason City, Ia.
 J. E. Guzman, Iowa City, Iowa.
 Hanson & Tyler Auto Co., Port Dodge, Iowa.
 Byrne Bros. Trans. & Carriage Co., 37 Julien Ave., Dubuque, Ia.
 Central Auto Supply Co., 1111 Locust St., Des Moines, Iowa.
 Sieg Iron Co., 302 E. Fifth St., Davenport, Iowa.
 Finck Auto Co., 1101-05 S. Fourth St., Clinton, Iowa.
 Blake-Hynes Auto Co., 201 Fourth Ave., Cedar Rapids, Iowa.
 Erickson Auto & Supply Co., Boone, Iowa.
 Vincennes Motor Mfg. Co., Vincennes, Ind.
 J. S. Cox, 222 S. Seventh St., Terre Haute, Ind.
 Rose City Auto Co., New Castle, Ind.
 Automobile Maintenance Co., 808 Monroe St., La Porte, Ind.
 Auto Supply Co., 122 Washington Blvd. W., Fort Wayne, Ind.
 Elmer Day, Evansville, Ind.
 Springfield Auto Sales Co., S. Fourth St., Springfield, Ill.
 E. J. Gustafson, Wells nr. Water Works, Rockford, Ill.
 Machine & Motor Co., Quincy, Ill.
 Graham-Seltzer Co., 120 Main St., Peoria, Ill.
 Plow City Garage, 422 16th St., Moline, Ill.
 Marseilles Auto & Supply Co., Marseilles, Ill.
 Wolverine Auto Co., 114 S. Grand Ave., Lansing, Mich.
 Temple Garage, Jackson, Mich.
 Michigan Tire Co., 218 Michigan, N. W., Grand Rapids, Mich.
 Forest Park Garage, Springfield, Mass.
 Middleboro Automobile Exchange, Wareham St., Middleboro, Mass.
 Auto Selling & Supply Co., 14 Fifth, New Bedford, Mass.
 Knox Street Auto Station, 31 Knox St., Lawrence, Mass.
 White & Durgin, Haverhill, Mass.
 Auto Supply Co. of Baltimore, 217 W. Saratoga St., Baltimore, Md.
 Waterville Motor Co., Main & College Ave., Waterville, Maine.
 Towle's Garage, Portland, Maine.

H. M. Cates, 22 Union Square, Houlton, Maine.
 Joseph Buzzell, Guilford, Maine.
 Phoenix Motor Car Co., Lexington, Ky.
 Bowling Green Garage, Bowling Green, Ky.
 Waterloo Auto & Supply Co., 616-18 Jefferson St., Waterloo, Ia.
 Schultz Auto Supply Co., 419 Sixth St., Sioux City, Iowa.
 Independent Auto Repair Co., 305 Jackson St., Sioux City, Ia.
 State Auto Supply Co., Oskaloosa, Iowa.
 Post Bros., Nevada, Iowa.
 Lou R. Heitz, 900 E. Second St., Muscatine, Iowa.
 Kingsbury-Leahy Co., 131 Hudson Ave., Albany, N. J.
 John L. Brock, Canal St., Trenton, N. J.
 E. E. Anderson, Summit, N. J.
 Marco Garage, 62 S. Orange Ave., South Orange, N. J.
 Newton Garage, Water & Clinton Sts., Newton, N. J.
 Victor A. Wiss & Bro., 12 Pine St., Morristown, N. J.
 D. W. Romaine, 225-27 Mercer St., Jersey City, N. J.
 Bateman Machine Co., Delaware & Arctic Aves., Atlantic City, N. J.
 N. A. Dunklee, 31 S. Main St., Concord, N. H.
 Omaha Rubber Co., 13th & Harney Sts., Omaha, Neb.
 L. O. Holmes, 246 S. 11th St., Lincoln, Neb.
 Western Motor Car Co., 319-27 S. Jefferson St., Springfield, Mo.
 Vehicle Top & Supply Co., 3414 Lindell St., St. Louis, Mo.
 Shapleigh Hardware Co., Third & Washington Sts., St. Louis, Mo.
 Igou Motor Co., 4335 Wayne St., St. Louis, Mo.
 Kansas City Auto Supply Co., 1504 Grand Ave., Kansas City, Mo.
 Cotner Auto Supply Co., Cape Girardeau, Mo.
 George E. Yokom Co., 1115 Military St., Port Huron, Mich.
 H. Rosso, 110 New, Mt. Clemens, Mich.
 Zimirc's Garage, 35 S. College St., Akron, Ohio.
 Yonkers Auto Service Co., 257 S. Broadway, Yonkers, N. Y.
 Utica Cycle Co., 117-19 Columbia St., Utica, N. Y.
 Syracuse Auto Supply Co., S. Warren St., Syracuse, N. Y.
 Close Bros., 405 Smith St., Schenectady, N. Y.
 Rochester Auto Supply Co., 352 Main E., Rochester, N. Y.
 Horace Sague & Son, 184-92 Church St., Poughkeepsie, N. Y.
 City Garage, Olean, N. Y.
 Royal Garage, 211-15 W. 95th St., New York, N. Y.
 G. O. Reynolds, Inc., 318 Main St., New Rochelle, N. Y.
 Youngs & Co., Newburgh, N. Y.
 Jamestown Garage Co., 205 Cherry St., Jamestown, N. Y.
 J. B. Lang Engine & Garage Co., 117-21 E. Green St., Ithaca, N. Y.
 Dorman's Garage, Geneva, N. Y.
 Barker, Rose & Clinton, Elmira, N. Y.
 Mr. Jas. G. Barclay, 720 Main St., Buffalo, N. Y.
 Binghamton Motor Car Co., 195-99 Water St., Binghamton, N. Y.
 S. Metcalf, Maple Ave., Bay Shore, N. Y.
 Sutton-Miller Co., Indiana, Pa.
 St. Clair Auto Co., N. Pennsylvania Ave., Greensburg, Pa.
 A. D. Spencer, Second & McKean Aves., Charleroi, Pa.
 Ideal Garage Co., Bradford, Pa.
 W. H. & L. C. Wolfe, 1011 Chestnut Ave., Altoona, Pa.
 Chanslor & Lyon Motor Supply Co., Portland, Ore.
 Wedge Garage Co., 170-72 S. Sixth St., Zanesville, Ohio.
 Youngstown Auto & Repair Co., 381-83 Arlington St., Youngstown, Ohio.
 Geo. A. Goetschius, 145 E. Market St., Tiffin, Ohio.
 Auto & Motor Boat Co., Steubenville, Ohio.
 Fernald & Crandall, Baker, Oregon.

STROMBERG MOTOR DEVICES CO.**64-68 E. 25th Street, Chicago, Ill.**

Portsmouth Auto & Machine Co., Portsmouth, Ohio.
 Abel Auto Co., 258 N. Main St., Marion, Ohio.
 Irvin F. Munch, 114 E. Elm St., Lima, Ohio.
 Broadway Garage, Findlay, Ohio.
 W. B. Schaeffer & Co., 25 E. Second St., Dayton, Ohio.
 Fifth St. Garage, Coshocton, Ohio.
 Columbus Automobile Supply Co., Fourth & Gay Sts., Columbus, Ohio.
 M. & M. Co., 500 Prospect St., Cleveland, Ohio.
 H. A. Paxton, 310 Sandusky Ave., Bucyrus, Ohio.
 Lavender Auto Supply Co., 930 Market, Wheeling, W. Va.
 Logan Auto & Carriage Co., 118-24 Fourth St., Parkersburg, W. Va.
 Chanslor & Lyon Motor S. Co., 916 F. Pike St., Seattle, Wash.
 D. A. Shafer & Co., 808 W. Broad St., Richmond, Va.
 Fisk Co. of Texas, 427 Main Ave., San Antonio, Texas.
 M. A. Newman Garage, Floresville, Texas.
 Fisk Co. of Texas, Ervay & Young St., Dallas, Texas.
 Ozborn Auto Supply Co., 231 Madison Ave., Memphis, Tenn.
 Rodgers & Co., 900-02 Gay St., Knoxville, Tenn.
 Carney Auto Co., Clarksville, Tenn.
 Wallace Buggy Co., 710 Market St., Chattanooga, Tenn.
 Providence Auto Equip. Co., 11 Dorrance St., Providence, R. I.
 Washington Automobile Co., 65-69 E. Malden St., Washington, Pa.
 Keystone Garage, Warren, Pa.
 Tamaqua Auto Garage & Repair Co., Tamaqua, Pa.
 Auto Supply Co., Center & Dix Sts., Scranton, Pa.
 E. S. Youse Co., 46 N. Fifth St., Reading, Pa.
 General Auto Supply Co., 15 S. Fifth St., Reading, Pa.
 Pittsburgh Auto Equipment Co., Baum & Beatty Sts. E. E., Pittsburgh, Pa.
 J. H. McCullough & Son, 219 N. Broad St., Philadelphia, Pa.
 C. H. Weaver, 33 Main St., Oil City, Pa.
 Johnstown Automobile Co., Johnstown, Pa.
 The Fisk Co. of Texas, San Antonio, Texas.
 The Hicks Auto Supply Co., Nashville, Tenn.
 American Ball Co., Providence, R. I.
 Motor Car Supply Co., Titusville, Pa.

Van Wert Garage, Van Wert, Ohio.
 The West End Repair Shop, New Philadelphia, Ohio.
 Thompson & Bishop, Waterbury, Conn.
 Maynard L. Allen, Corning, N. Y.
 Grand Machine Co., Haupt Bros., St. Louis, Mo.
 Meyer Auto Repair Co., Toledo, Ohio.
 Motor Mart Co., Springfield, Ohio.
 The Mansfield Garage, Mansfield, Ohio.
 R. B. Kuhn, Canton, Ohio.
 Richbell Corp., Mamaroneck, N. Y.
 Mohawk Valley Supply Co., Herkimer, N. Y.
 National Garage Co., Hempstead, N. Y.
 Chas. Schenck & Co., Concord, S. I., N. Y.
 Lewis E. Springer, Auburn, N. Y.
 Auto Inn Garage, Asbury Park, N. J.
 Bell Bros., Stamford, Conn.
 J. F. Carl, Crown Point, Ind.
 Ross Motor Car Co., 1805-07 Winter St., Superior, Wis.
 Schoelkopf Garage, 116 S. Pinckney St., Madison, Wis.
 Battle & Hubbard, Dallas, Texas.
 W. S. Covington & Co., Mayfield, Ky.
 Central Motors Co., Owensboro, Ky.
 Freeport Garage, Freeport, Ill.
 Grinnell Motor Co., Muncie, Ind.
 Johnstown Auto Co., Marshalltown, Iowa.
 O. C. Shreffler & Son, Manteno, Ill.
 The Marco Garage, South Orange, N. J.
 Anderson's Garage, Summit, N. J.
 Shackford's Garage, Manchester, N. H.
 Central Supply Co., Worcester, Mass.
 Stotley's Garage, Champaign, Ill.
 Ozburn Auto Supply Co., Atlanta, Ga.
 General Auto Supply Co., Lancaster, Pa.
 Harry A. Scott & Co., Kalamazoo, Mich.
 The St. Croix Garage, Calais, Me.
 H. A. Paxton, Bucyrus, Ohio.
 Battle & Hubbard, Dallas, Texas.
 J. A. Strimple Co., Janesville, Wis.

MAYER CARBURETOR COMPANY BUFFALO, N. Y.

SALES OFFICE
306 Ford Building
Detroit, Mich.

FACTORY
2673 Main Street
Buffalo, N. Y.

SERVICE STATIONS

Asheville Auto Co., 150 So. Lexington Ave., Asheville, N. C.
Augustan Garage, Cobleskill, N. Y.
Boecher, J. M., Hallsville, Ohio.
Centaur Motor Co., 2246 Michigan Ave., Chicago, Ill.
Chalmers Motor Co. of N. Y., Broadway at 50th, New York, N. Y.
City Cycle & Auto Co., 29 Railroad St., Cortland, N. Y.
Collins, E. B. Motor Co., 201 W. Main St., Lafayette, Ind.
Dutton, F. A. Motor Co., 76 Huntington Ave., Boston, Mass.
Galbraith, J. R., 107 Grace Street, Pittsburg, Pa.
Gianotti, F. B., Fourth and Monroe Sts., Memphis, Tenn.
Gibbes Machinery Co., Wheat and Assembly Sts., Columbia, S. C.
Imperial Automobile Co., Dallas, Texas.
June Auto Company, Ferry and Water Sts., Binghamton, N. Y.
Kenney, F. H., 681 Main St., Worcester, Mass.
Keystone Motor Car & Mach. Co., Tyrone, Pa.
Kimbrough Auto Company, Greenwood, Miss.
Koehler, H. J. Sporting Gds. Co., 1709 Broadway, New York, N. Y.

Lackawanna Auto Co., 312 Adams St., Scranton, Pa.
Lafayette Auto Co., 110 N. 5th St., Lafayette, Ind.
Lummas & Stanley, Front and Ninth Sts., Columbus, Ga.
Maple Avenue Garage, 23 Maple Ave., Cortland, N. Y.
Menhall, J. W. Auto Company, Beloit, Wis.
Paddock Zusi Motor Car Co., 213 Clinton Ave., Newark, N. J.
Pittsburg Chalmers Motor Co., 420 N. Craig St., Pittsburg, Pa.
Reese, S. Mach. Tool Wks., 224 W. Main St., Plymouth, Pa.
Sammis & Downer Co., 1902 Broadway, New York, N. Y.
Stanhope, W. E., 14 Broadway, New Port, R. I.
Sterling Motor Co., 320 N. Delaware St., Indianapolis, Ind.
Levesque, Victor, 530 Parc La Fontaine, Montreal, Quebec.
Teegarden & Putt, 209 N. Main St., Goshen, Ind.
Wilkins, Willson, Fort Pierce, Fla.
Zell Motor Car Co., Mt. Royal Ave., East Baltimore, Md.
Zell Motor Car Co. of Wash., 1405 H. St., Washington, D. C.
Zimber, Chas., Chilli and Gardiner Aves., Rochester, N. Y.

The following are service stations connection with the National United Service Co.

Central Garage, NUSCO No. 25, Jefferson and Shelby Sts.
Jefferson Garage, NUSCO No. 28, East Jefferson St. Near Walker St.
Zinzibar Garage, NUSCO No. 22, W. Blvd. and Michigan Ave.
Peninsular Garage, NUSCO No. 12, Highland Park.
Gratiot Avenue Garage, NUSCO No. 14, Gratiot Ave. and Blvd.
Temple Garage, NUSCO No. 4, Lafayette Ave. and Wayne Sts.
Healey Garage, NUSCO No. 23, Grand River Ave. and Blvd.
NUSCO Station No. 41, Sea Cliff, L. I.
NUSCO Station No. 32, Philadelphia, Pa. (Changing address).
NUSCO Station No. 31, Monroe, Mich., Mr. Berryman.
NUSCO Station No. 6, Goree, Texas, Mr. Spangler.
NUSCO Station No. 7, Elmwood, Okla., Mr. Phillips.
NUSCO Station No. 2, Lima, Ohio, Mr. C. J. Vortkamp.
NUSCO Station No. 3, Toledo, Ohio, Mr. Wagonhauser.
NUSCO Station No. 18, Dearborn, Mich., Mr. Beauford.

NUSCO Station No. 19, Wayne, Mich., Mr. Beauford.
NUSCO Station No. 16, Ecorse, Mich., Mr. Smith.
NUSCO Station No. 15, Wyandotte, Mich., Mr. Smith.
NUSCO Station No. 11, River Rouge, Mich., Mr. Smith.
NUSCO Station No. 10, Trenton, Mich., Mr. Smith.
NUSCO Station No. 9, Harrisburg, Pa., Mr. Coats.
NUSCO Station No. 8, 154 Dwight St., Springfield, Mass.
NUSCO Station No. 5, Lincoln, Nebr. (Motor Inn, 11th and M Sts.)
NUSCO Station No. 20, Mr. McElfrick, 3916 Arsenal St., St. Louis, Mo.
NUSCO Station No. 21, Wozencraft & Co., Race St., Cincinnati, Ohio.
NUSCO Station No. 22, Mr. Ivey, Augusta, Ga.
NUSCO Station No. 26, Salineville Auto & Garage Co., Salineville, Ohio.

