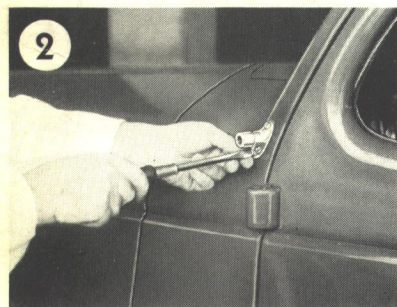


Installing a Safetylight is simpler and easier than installing a radio or heater. No special tools needed. Four simple steps.

See below.



Position template enclosed with each bracket set in the manner shown above. Spot and drill two 1/8" holes.



Position the bracket over the 1/8" drill holes and attach with self-threading screws.



Put drill bushing in outside bracket and drill hole with 1/2" drill. The angle is pre-determined by bracket and drill bushing. Hold drill level.



Press light through drilled hole—attach inside bracket, adjust frictions and the stop. Attach wire to ammeter. *That's all there is to it!*

SAFETYLIGHT OFFERS YEAR 'ROUND MARKET

SAFETYLIGHT BRACKETS are cast in brass to fit contour of corner posts of cars without filing or fitting.

The illustrations on side of this page show how easy it is to install a Safetylight. Complete instructions, templates and hardened drill bushing accompany each set of brackets.

BRACKET SPECIFICATIONS

Number before dash indicates outside, number after dash indicates inside, bracket. Always list both numbers, thus 60-4, when ordering brackets.

MAKE	1937	1936	1935	MAKE	1937	1936	1935
Auburn—Closed		60-4	60-4	Hupmobile		52R-23	52R-23
Auburn—Conv. and Speedster		57-24	57-24	International Truck		70-1	70-1
Buick—Closed and Convertible	76-23	76-23	32B-4	LaFayette—Closed and Convertible	76-23		
Cadillac—Closed and Convertible	76-23			LaFayette—Closed			67-4
Cadillac—V8 Closed		80-23	32B-4	LaFayette—3600 Series		79-23	50-23
Cadillac—Fleetwood		76-23	63-23	La Salle—Closed	76-23	80-23	68-23
Chevrolet—Master Closed	76-23	76-23	68-23	LaSalle—Convertible	76-23	80-23	69-23
Chevrolet—Standard		76-23	50-4	Lincoln	68-4	86-1	61 1/2-4
Chevrolet—Convertible	76-23	78-23	68-23	*Lincoln—Zephyr	84-8	84-4	
Chevrolet—Commercial	82-23	82-23	52-23	Nash—Closed and Convertible	76-23	79-23	67-4
Chrysler—Airflow	79-1	79-1	50-1	Oldsmobile—Closed	76-23	76-23	68-23
Chrysler—Airstream	90-23	79-23	50-4	Oldsmobile—Convertible	76-23	76-23	69-23
Cord—Closed		77-4		Packard—115 and 120 Series Closed	77-4	77-4	63-4
Cord—Convertible		88-4		Packard—115 and 120 Series Conv.	85-4	85-4	
De Soto—Airflow	79-1	79-1	50-1	Packard—8, Super 8 and 12 Closed	89-5	89-5	89-5
De Soto—Airstream	90-23	79-23	50-4	Pierce Arrow	52-4	52-4	52-23
Diamond T. Truck	87-8	87-8		Plymouth—Closed	90-23	79-23	50-4
Dodge—Closed and Convertible	90-23	79-23	50-4	Plymouth—Convertible	90-23	79-23	50-4
Dodge—Commercial	83-1	83-1	52-24	Pontiac—Closed	76-23	76-23	68-23
Ford—Closed and Convertible	66-4	66-4	66-23	Pontiac—Convertible	76-23	76-23	69-23
Ford—Open		71-4	71-4	Reo		66-4	
Ford—Commercial	55-24	55-24	55-24	Reo—Speed Wagon		70-4	52-4
General Motors Truck	83-4	83-4	52-6	Studebaker—Closed	81-23	81-23	60-4
Graham—Series 95-110-120	76-4			Studebaker—Convertible			66-4
Graham—Series 80		52R-4	52R-4	Terraplane—Closed and Convertible	91-23	78-23	63-4
Graham—Series 90-110		79R-4		Willys		52-23	52-23
Hudson—Closed and Convertible	91-23	78-23	63-4				

*Special Standard Lincoln Zephyr Light.....\$20.00

N.B.—When brackets are ordered for cars not listed (Older models, convertible or open model cars) always specify Make, Model and Year of cars for which desired.

For right hand installations order right hand lights and right hand brackets, specifying Make, Model and Year of car, bus or truck.

TRUCK—BUS INSTALLATIONS

Unless otherwise specified above, Safetylights invariably can be installed on trucks and buses with our Universal Brackets, No. 52-23 or 70-4. If further data are desired, write us giving Make, Model and Year of truck or bus.

We advise against installation of lights through roof of cabs, but if customer insists on same, order Bracket No. 100-6 for such installations, using regular models of Safetylights.

SUGGESTION TO JOBBERS

Safetylights may be ordered with brackets or without brackets, and any brackets desired ordered and billed separately.

It is recommended that jobbers stock Safetylights without brackets—and carry a selected stock of brackets separately. Any set of brackets may be used with either model light, hence a good stock of brackets assures rapid turnover of lights or big profits with low investment.

Safetylight is backed by national advertising . . . this advertising spells profits for smart dealers who tie in with it. Free display stands and literature available to jobbers and dealers.